

Traktor Bezeichnung: LT 12 & LT 16 Series 2 Lawn Tractors Modell: Jahr:

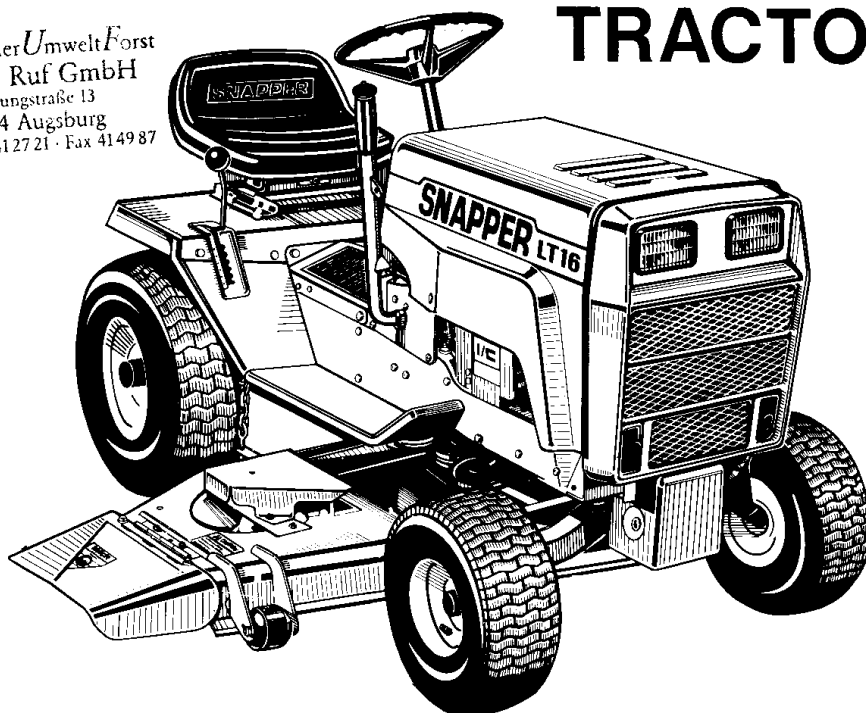
Parts Manual for



SNAPPER®

LT 12 & LT 16 SERIES 2 LAWN TRACTORS

Rasenmäher UmweltForst
Eduard Ruf GmbH
Wirsungstraße 13
86154 Augsburg
Tel. 08 21 / 41 27 21 · Fax 41 49 87



& MOWER ATTACHMENTS

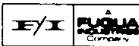
Refer to Parts Manual #06614 for Lawn Tractor Accessory Parts.

NOTE: The Series number is the last numeral in the model number.

IT IS THE POLICY OF SNAPPER POWER EQUIPMENT TO IMPROVE ITS PRODUCTS WHENEVER IT IS POSSIBLE AND PRACTICAL TO DO SO. WE RESERVE THE RIGHT TO MAKE CHANGES OR ADD IMPROVEMENTS AT ANY TIME WITHOUT INCURRING ANY OBLIGATION TO MAKE SUCH CHANGES ON PRODUCTS MANUFACTURED PREVIOUSLY.

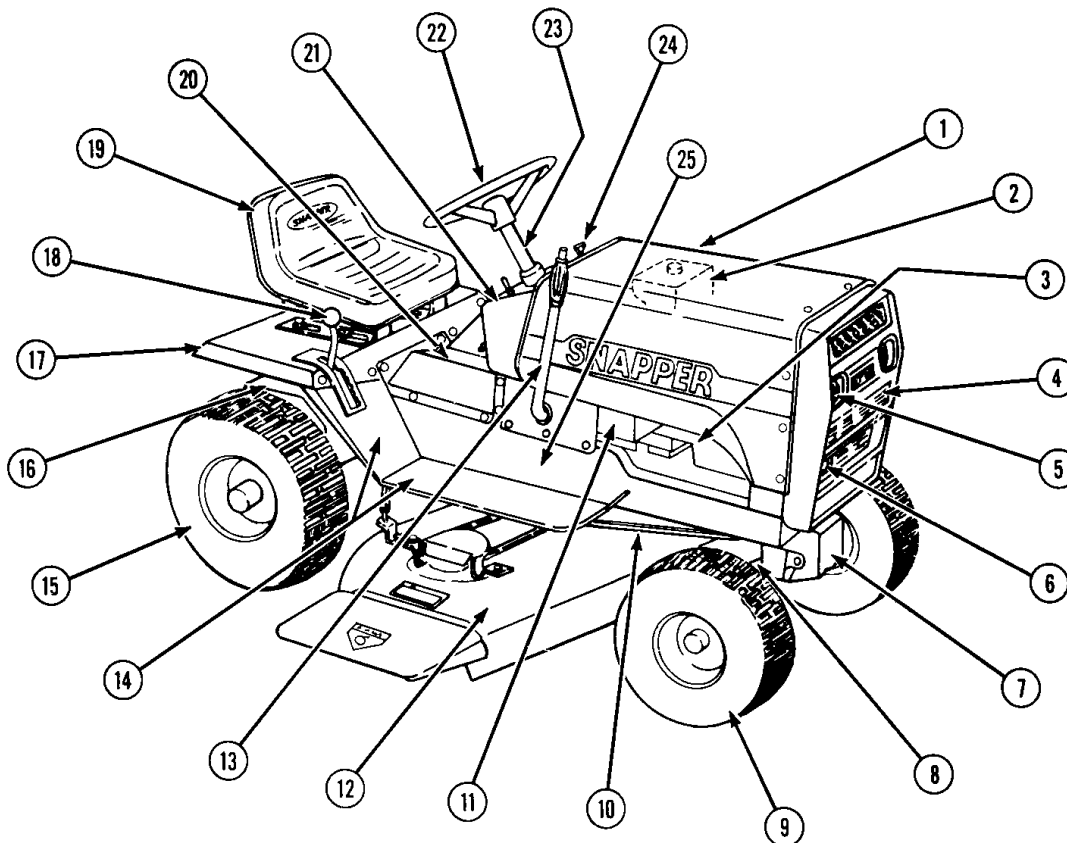
(2/86 ISSUE)

SNAPPER POWER EQUIPMENT
McDonough, Georgia 30253
A Division of Fuqua Industries



MANUAL #06514

Traktor Bezeichnung: LT 12 & LT 16 Series 2 Lawn Tractors Modell: Jahr:



**NOTE: LAWN TRACTOR ACCESSORIES
ARE LISTED IN LT MANUAL #06614**

INDEX-MAIN COMPONENTS

ITEM DESCRIPTION	PAGE	ITEM DESCRIPTION	PAGE
1 HOOD	3	13 IMPLEMENT LIFT	22
2 FUEL SYSTEM	4	14 STEP PLATES, PANELS	10&11
3 ENGINE	8 & 9	15 REAR WHEELS	21
4 GRILLE	3	16 TRANSMISSION, AXLE	6,16,18&19
5 HEAD LAMPS	3&20	17 REAR FENDER	10
6 EXHAUST	8	18 CONTROLS (BRAKE, CLUTCH) ...	12&13
7 MULE DRIVE	30	19 SEAT	10
8 FRONT AXLE	14	20 CENTER COVER	8
9 FRONT WHEELS	21	21 DASH PANEL	5
10 BELTS, MOWER	24&26	22 STEERING WHEEL	14&15
11 BATTERY	20	23 STEERING MECHANISM	14&15
12 MOWERS (33")	24&25	24 CHOKE, THROTTLE CONTROLS ..	4&5
12 MOWERS (41")	26&27	25 CHASIS, FRAME PARTS	8&9
12 MOWERS (48")	28&29		

LT SNOW THROWER PARTS IN MANUAL #06614

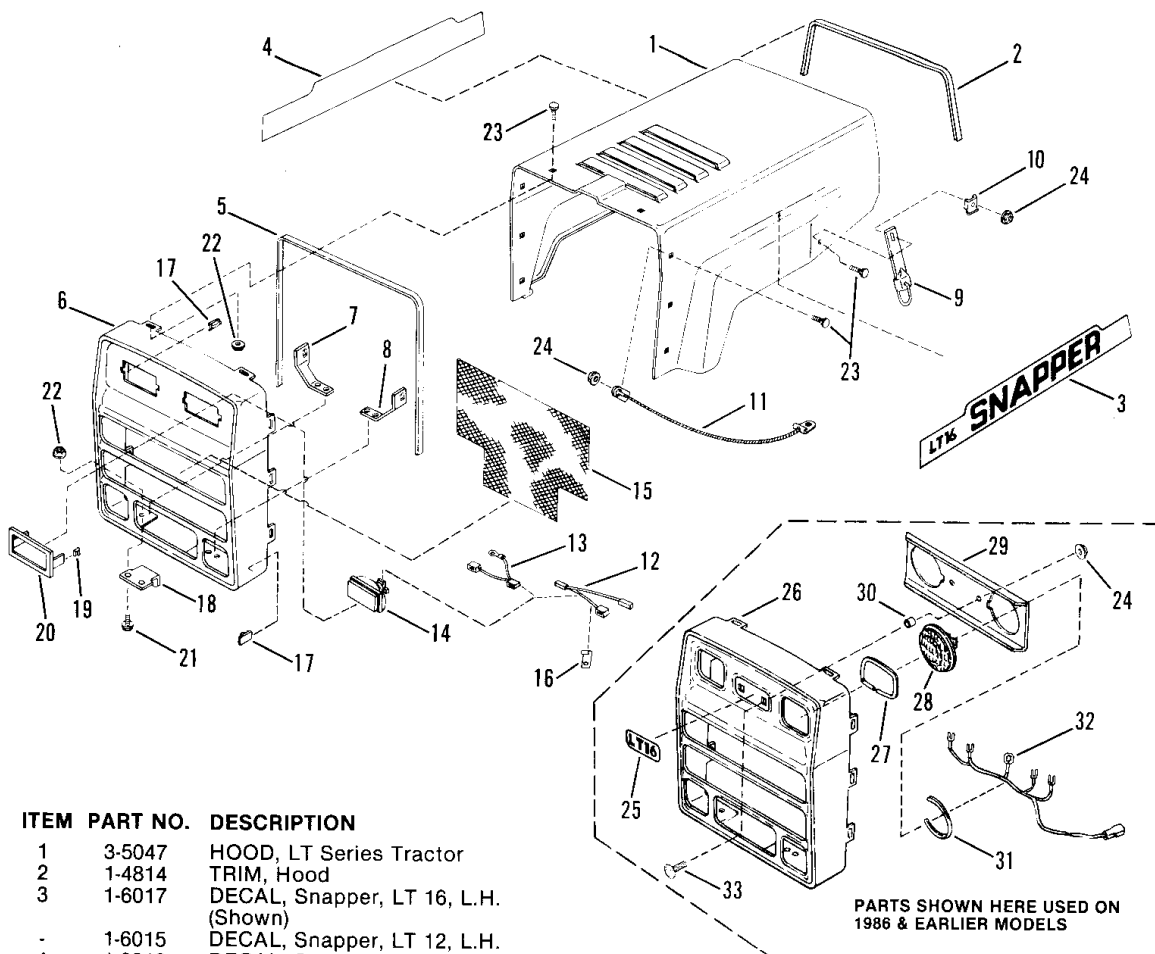
MANUAL #06514 (2/86)

2

LT16 & LT12 SERIES 2

Traktor Bezeichnung: LT 12 & LT 16 Series 2 Lawn Tractors Modell: Jahr:

HOOD, GRILLE, HEADLAMPS

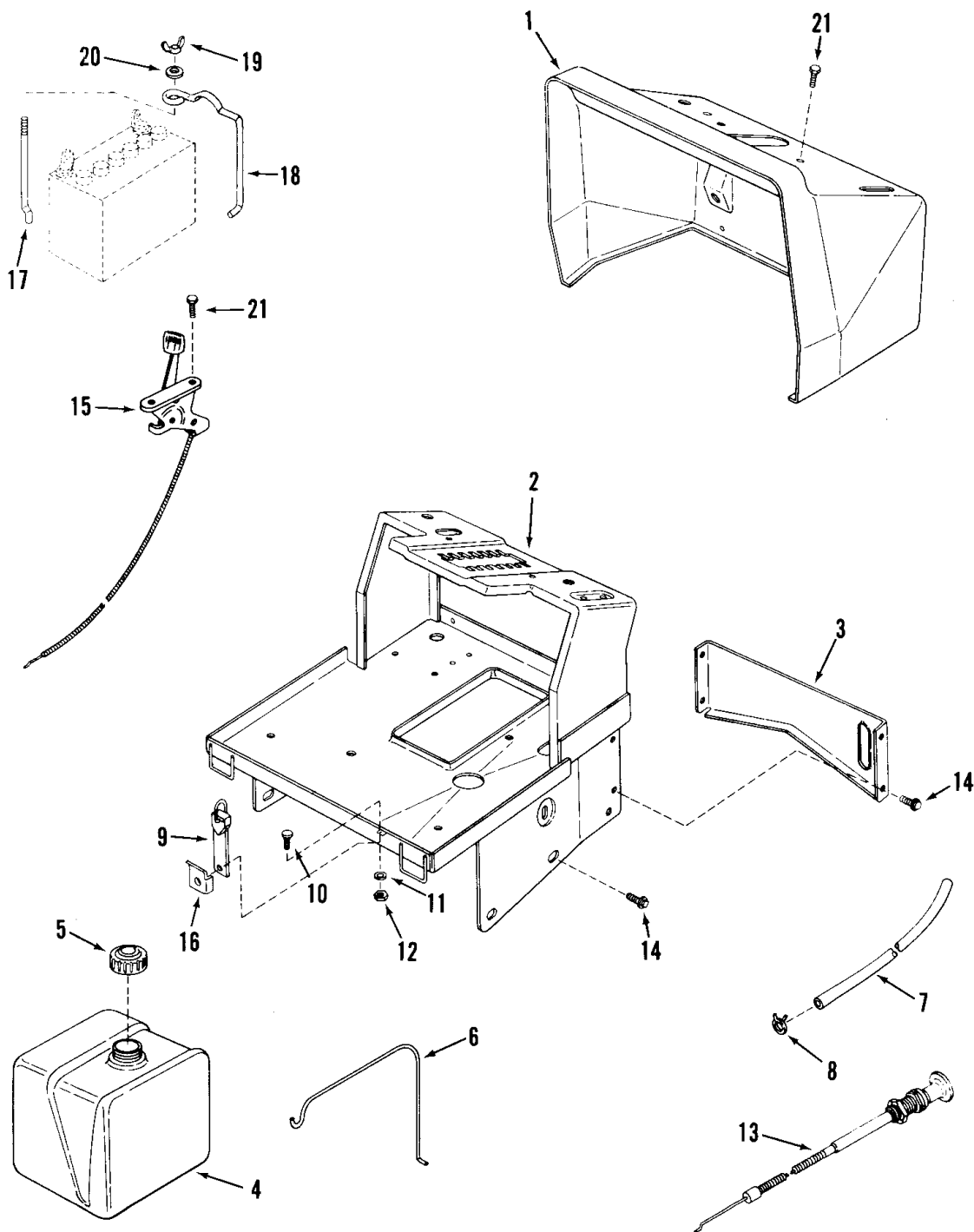


ITEM	PART NO.	DESCRIPTION
1	3-5047	HOOD, LT Series Tractor
2	1-4814	TRIM, Hood
3	1-6017	DECAL, Snapper, LT 16, L.H. (Shown)
-	1-6015	DECAL, Snapper, LT 12, L.H.
4	1-6016	DECAL, Snapper, LT 16, R.H.
-	1-6014	DECAL, Snapper, LT 12, R.H.
5	1-4815	GASKET, Grille
6	3-5103	GRILLE (1987 & Later)
7	3-8157	BRACE, Grille, R.H.
8	3-8158	BRACE, Grille, L.H.
9	1-8254	LATCH, Hood Retaining (2)
10	3-2444	CLIP, Hood Retainer (2)
11	1-2674	CABLE, Hood Stop (2)
12	1-5486	HARNES, Head Lamp Wiring (1987 & Later)
13	1-5487	HARNES, Head Lamp Ground Wiring (1987 & Later)
14	1-8829	HEAD LAMP (2) (1987 & Later)
15	3-6117	MESH, Grille
16	1-2652	CLIP, Wiring Harness (2)
17	1-2691	CLIP (2)
18	3-2398	HINGE, Hood (2)
19	1-5664	CLIP, Head Lamp Mounting (4)
20	1-8828	BEZEL, Head Lamp Mounting (2)

ITEM	PART NO.	DESCRIPTION
21	9-0596	BOLT, 1/4-20x5/8" Hex Flange Lock (4)
22	9-0583	NUT, 1/4-20 Hex Flange Lock (12)
23	9-0803	BOLT, 1/4-20x5/8" Flat Head Carriage (10)
24	9-0477	NUT, 1/4-20 Hex Flange Top Thread Lock (6)
25	1-5267	DECAL, LT 12
-	1-4816	DECAL, LT 16
26	3-5049	GRILLE (1986 & Earlier)
27	1-2651	GASKET, Head Lamp (2)
28	1-8415	HEAD LAMP (2) (1986 & Earlier)
29	3-8083	BRACKET, Head Lamp
30	1-4874	SPACER (2)
31	1-2650	GASKET, Head Lamp to Bracket (2)
32	1-9529	HARNES, Head Lamp Wiring (1986 & Earlier)
33	9-0867	BOLT, 1/4-20x1" Flat Head Carriage (2)

Traktor Bezeichnung: LT 12 & LT 16 Series 2 Lawn Tractors Modell: Jahr:

FUEL TANK, PEDESTAL, DASH & HOLD DOWNS



MANUAL #06514 (2/86)

4

LT16 & LT12 SERIES 2

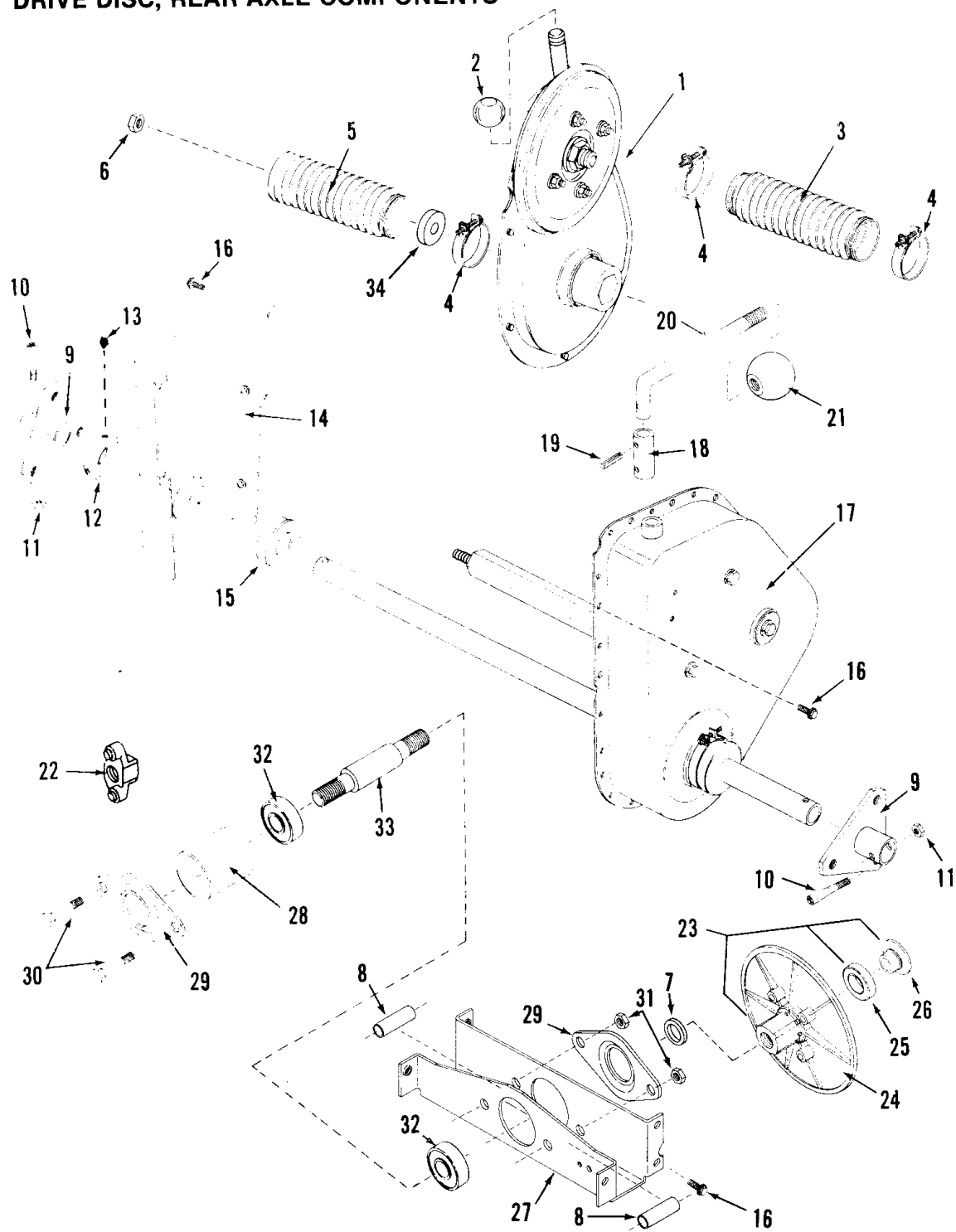
Traktor Bezeichnung: LT 12 & LT 16 Series 2 Lawn Tractors Modell: Jahr:

FUEL TANK, PEDESTAL, DASH & HOLD DOWNS

ITEM	PART NO.	DESCRIPTION
1	1-9958	PANEL, Dash
2	4-9943	PEDESTAL
3	3-8143	BRACKET, Lower Dash
4	5-7334	TANK, Fuel (Includes item 7)
5	1-4363	CAP, Fuel Tank Filler
6	1-8624	HOLD-DOWN, Fuel Tank
7	1-2912	LINE, Fuel (12.5" Long)
8	1-2222	CLAMP, Fuel Line (2)
9	1-8254	STRAP, Tank Hold Down
10	9-0803	BOLT, 1/4Cx5/8
11	9-0055	WASHER, 1/4 SAE
12	9-0477	LOCKNUT, 1/4C Hex
13	1-8674	CONTROL, Choke Cable
14	9-0361	SCREW, 5/16Cx5/8 Self Tap (10)
15	1-8675	CONTROL, Throttle
16	3-2444	CLIP, Hood Retainer
17	3-2296	HOLD-DOWN, Battery
18	1-4434	CLAMP, Battery
19	9-0311	WING-NUT, 1/4C
20	9-0055	WASHER, 1/4 Flat
21	9-0853	SCREW, #10Cx1/2 Self Tap

Traktor Bezeichnung: LT 12 & LT 16 Series 2 Lawn Tractors Modell: Jahr:

DRIVE DISC, REAR AXLE COMPONENTS



MANUAL #06514 (2/86)

6

LT16 & LT12 SERIES 2

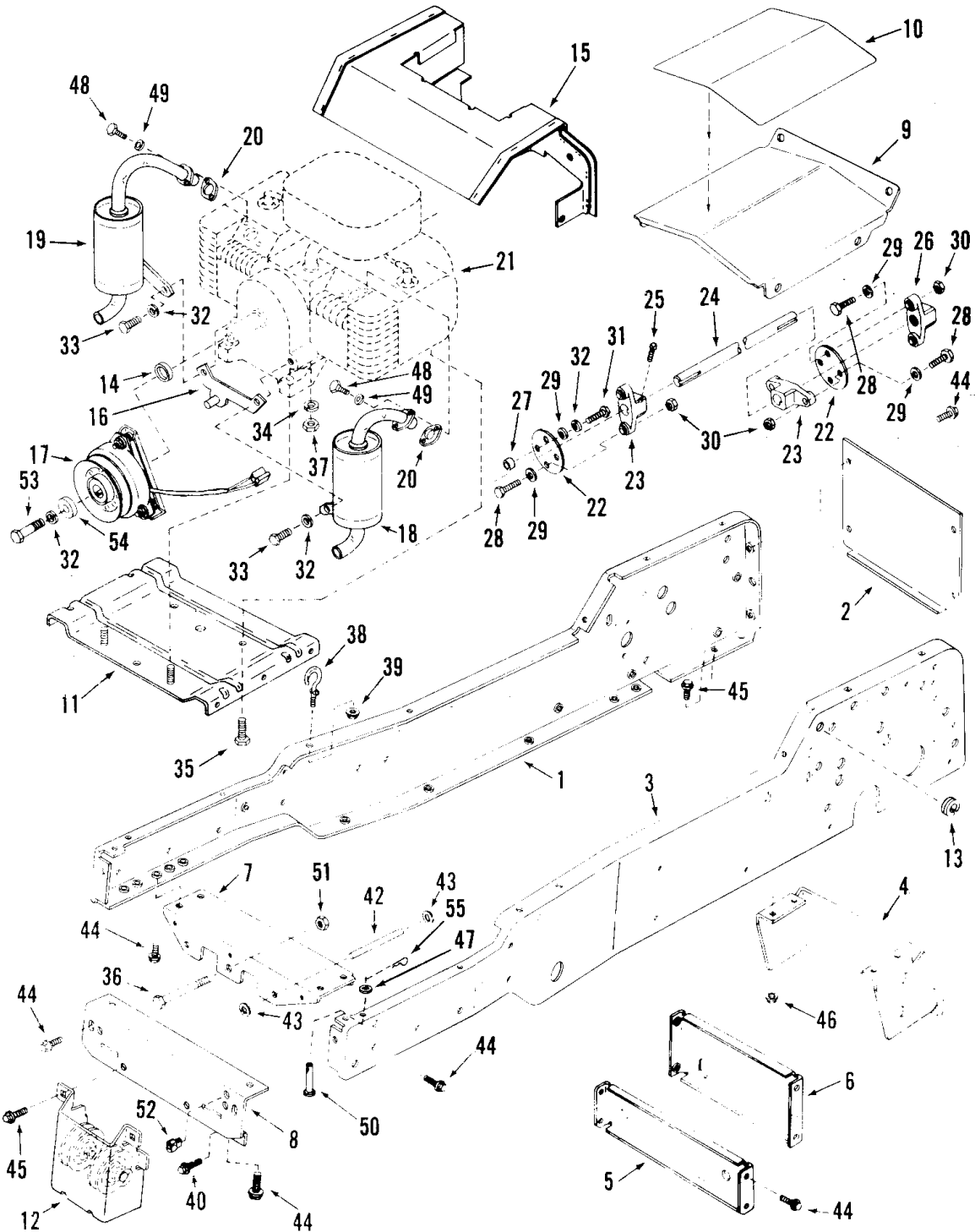
Traktor Bezeichnung: LT 12 & LT 16 Series 2 Lawn Tractors Modell: Jahr:

DRIVE DISC, REAR AXLE COMPONENTS

ITEM	PART NO.	DESCRIPTION
1	5-9639	PRIMARY CHAIN CASE (See page 18 for parts breakdown)
2	1-4396	BUSHING, Primary Clutch
3	1-8660	BOOT, Left Side Oil Seal
4	1-1037	CLAMP, Boot (4)
5	1-8770	BOOT, Right Side Oil Seal
6	9-0613	NUT, 3/8-16 Hex Flange Lock
7	1-0121	WASHER, Shim (2)
8	1-5264	SPACER
9	4-0529	HUB, Rear Wheel (2)
10	1-1013	BOLT, Tapered (2)
11	1-1201	LOCKNUT, 5/16-24 Hex (2)
12	1-4401	LOCK-COLLAR (Includes item 13)
13	9-0201	SETSCREW, 5/16-18x5/16 (2)
14	5-7328	ASSEMBLY, Axle Support (includes item 15)
15	1-4400	BEARING, Ball
16	9-0361	SCREW, 5/16x5/8 Hex Washer Flange Self-Tap (18)
17	5-9846	ASSEMBLY, Transmission (See page 16-17 for parts breakdown)
18	2-1903	COUPLING, Shift Lever
19	9-0844	ROLL-PIN, 3/16x3/4 (2)
20	3-2308	LEVER, HI-LO Shifter
21	1-4501	KNOB, Shifter Ball
22	1-8584	HUB, Flex Coupling (See page 8)
23	5-1418	ASSEMBLY, Drive Disc (includes items 24 thru 26)
24	1-8567	DISC, Drive
25	1-4514	BEARING, Ball
26	1-4447	BUTTON, Center
27	3-6155	SUPPORT, Bearing (Latest version-requires items 32,33)
28	2-1973	TUBE
29	3-2396	RETAINER (2)
30	9-0912	CAPSCREW, 5/16-18x4-1/4 Hex Head (2)
31	9-0184	LOCKNUT, 5/16-18 Hex (2)
32	1-3313	BEARING, Ball (2)
33	2-1972	SPINDLE, Drive Disc
34	3-7776	WASHER, Shim

Traktor Bezeichnung: LT 12 & LT 16 Series 2 Lawn Tractors Modell: Jahr:

FRAME, ENGINE & DRIVE PARTS



MANUAL #06514 (2/86)

8

LT16 & LT12 SERIES 2

Traktor Bezeichnung: LT 12 & LT 16 Series 2 Lawn Tractors Modell: Jahr:

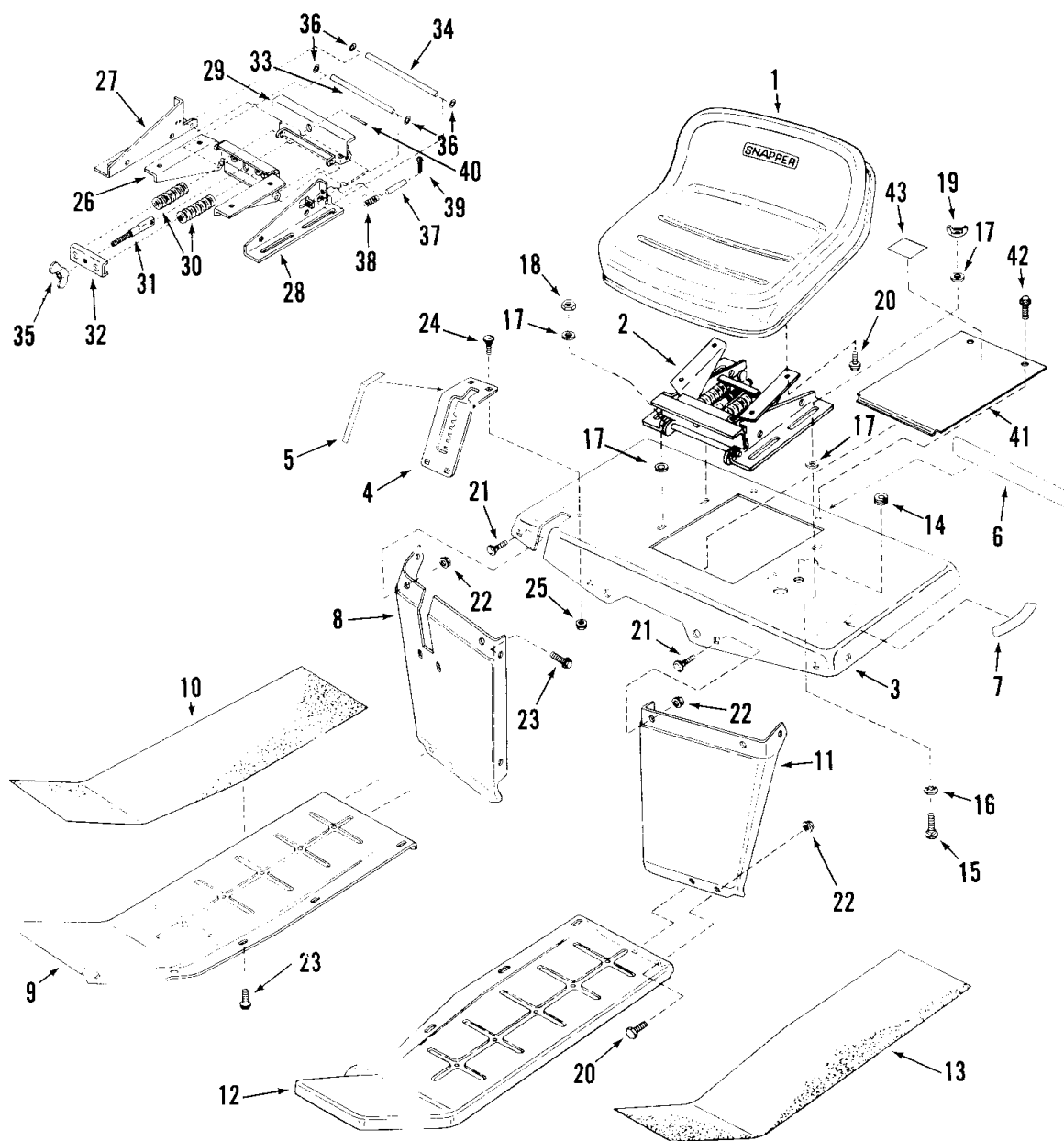
FRAME, ENGINE & DRIVE PARTS

ITEM	PART NO.	DESCRIPTION
1	5-7425	CHANNEL, Right Hand Frame
2	3-8185	PLATE, Rear Cover
3	5-7424	CHANNEL, Left Hand Frame
4	3-5029	DRAWBAR
5	3-6078	BRACE, Forward
6	3-6079	BRACE, Rear Cross
7	3-8051	CHANNEL, Front Axle Support
8	5-9648	PLATE, Front Frame
9	3-6067	COVER, Console
10	1-6009	DECAL, Console Cover
11	5-7342	BASE, Engine
12	5-7362	ASSEMBLY, Mule Drive (See page 30 for breakdown)
13	1-4856	GROMMET, Split
14	2-1960	SPACER, Clutch
15	5-9637	ASSEMBLY, Heat Shield
16	4-0528	BRACKET, Clutch Retainer
17	1-9982	KIT, Electric Clutch (See page 31 for breakdown)
18	1-9741	MUFFLER, LT16 & LT12 Engine
19	1-9742	MUFFLER, LT16 & LT12 Engine
20	1-4802	GASKET, Exhaust (2)
21	00050	ENGINE, Briggs & Stratton Model 402417, 16 HP
-	1-7991	ENGINE, Briggs & Stratton Model 404417, 12.5 HP
22	1-4338	DISC, Flex Coupling (2)
23	1-8626	HUB, Flex Coupling (2)
24	2-1944	SHAFT, Drive
25	9-0848	SET-SCREW, 5/16-18x1/2 Square Head (4)
26	1-8584	HUB, Flexible Coupling (Threaded center)
27	1-4803	SPACER, Flexible Coupling (2)
28	9-0138	SCREW, 3/8Cx1" Hex Head Cap (6)
29	3-2070	WASHER, 3/8 Flat (8)
30	9-0546	LOCKNUT, 3/8C Hex (6)
31	9-0143	SCREW, 3/8Cx1-1/4 Hex Head Cap (2)
32	9-0118	LOCKWASHER, 3/8 Split (5)
33	9-0603	SCREW, 3/8-16x7/8 Hex Head Cap (2)
34	9-0187	LOCKWASHER, 5/16 Split (4)
35	9-0324	SCREW, 3/8x16x1 Self Tapping (2)
36	9-0826	SCREW, 1/2-20x4 Hex Head Cap
37	9-0196	NUT, 5/16-18 Hex (2)
38	1-4438	HOOK, Hood Latch (2)
39	9-0585	LOCKNUT, 5/16-18 Flange (2)
40	9-0362	SCREW, 1/4Cx5/8 HW Flange Selt Tap
41	1-3847	RETAINER, 3/8 Bolt
42	3-2298	STOP, Axle (2)
43	1-3946	RETAINER, 3/8 Shaft (4)
44	9-0361	SCREW, 5/16Cx5/8 Hex Washer Flange Self Tap (36)
45	9-0612	LOCK BOLT, 3/8Cx3/4 Hex Flange (6)
46	9-0613	LOCKNUT, 3/8C Hex Flange (4)
47	9-0919	PUSHNUT, 1/4 (2)
48	9-0072	SCREW, 1/4-20x5/8 Hex Head Cap (4)
49	9-0052	LOCKWASHER, 1/4 Split (4)
50	1-2392	PIN, 1/4x7/8 Clevis (2)
51	9-0393	NUT, 1/2-20 Hex Lock
52	1-4804	RELIEF, Strain
53	9-0523	SCREW, 3/8-24x1 5/8 Hex Head Cap (Gr 5)
54	9-0905	WASHER
55	1-2431	PIN, 1/4 Hair

Purchase engine parts, other than those shown here,
from Briggs & Stratton Service outlet.

Traktor Bezeichnung: LT 12 & LT 16 Series 2 Lawn Tractors Modell: Jahr:

SEAT, STEP PANELS & REAR FENDER



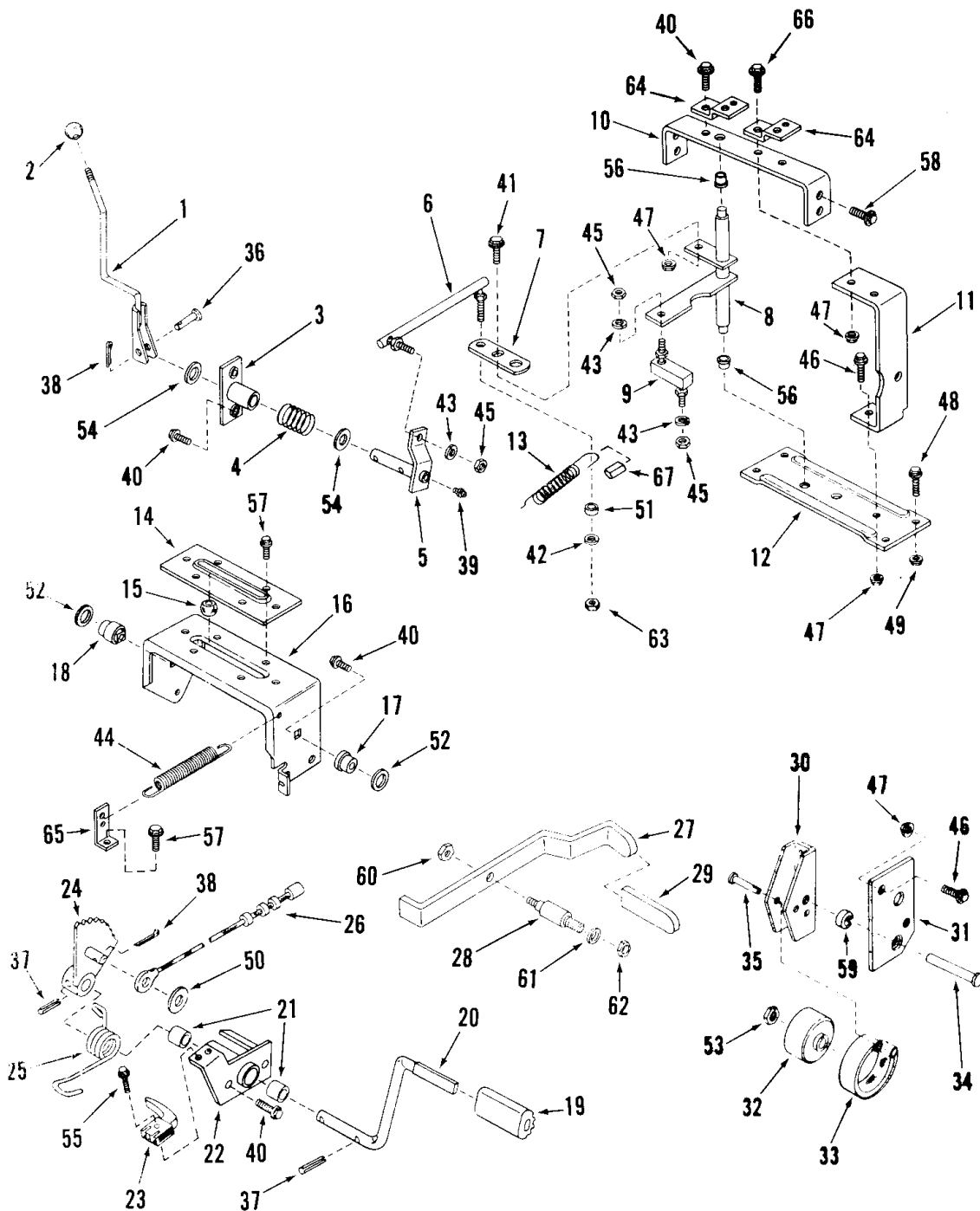
Traktor Bezeichnung: LT 12 & LT 16 Series 2 Lawn Tractors Modell: Jahr:

SEAT, STEP PANELS & REAR FENDER

ITEM	PART NO.	DESCRIPTION
1	1-9964	SEAT, Operator's
2	5-9841	ASSEMBLY, Seat Suspension
3	3-5071	FENDER, Rear
4	3-8089	DETENT, Shift
5	1-4506	DECAL, Speed Shift
6	1-8593	DECAL, SNAPPER
7	1-4505	DECAL, HI-LOW RANGE (SHIFT)
8	3-9932	EXTENSION, Right Side Fender
9	3-5016	PANEL, Right Side Step
10	1-8602	TREAD, Right Side (Non-Skid)
11	3-9931	EXTENSION, Left Side Fender
12	3-5015	PANEL, Left Side Step
13	1-8603	TREAD, Left Side (Non-Skid)
14	1-4856	GROMMET, Split
15	9-0208	CARRIAGE BOLT, 5/16-18x1" (4)
16	1-1791	RETAINER, Bolt (4)
17	1-3848	WASHER, 5/16 (8)
18	9-0184	LOCKNUT, 5/16-18 Hex (2)
19	1-4848	WING-NUT, 5/16-18
20	9-0721	LOCK BOLT, 5/16-18x1/2 Hex Flange (8)
21	9-0731	CARRIAGE BOLT, 5/16-18x1/2 Short Neck (6)
22	9-0585	LOCKNUT, 5/16-18 hex (10)
23	9-0361	SCREW, 5/16-18x5/8 Self Tap (16)
24	9-0005	CARRIAGE BOLT, 1/4-20x1/2 (4)
25	9-0583	LOCKNUT, 1/4-20 Hex Flange (4)
26	4-9720	WELDMENT, Seat Hinge
27	3-6119	MOUNTING ANGLE, L.H.
28	3-6118	MOUNTING ANGLE, R.H.
29	4-7838	WELDMENT, Seat Hinge
30	1-4845	SPRING, Seat (2)
31	1-4844	ROD, Adjusting
32	3-2399	RETAINER-SPRING
33	2-1947	PIN-SEAT TILT HINGE
34	2-1948	PIN-SEAT TILT HINGE
35	1-4850	WINGNUT, 1/2-13
36	1-3946	PUSHNUT, 3/8 (4)
37	2-1946	PLUNGER
38	1-4846	SPRING COMPRESSION
39	9-0037	Pin, 3/32x3/4 Cotter
40	9-0843	PIN-3/16x1 3/4
41	3-8186	COVER, Access
42	9-0858	SCREW, 5/16-18x1/2 Self-tapping (2)
43	1-4921	DECAL, Seat Adjustment

Traktor Bezeichnung: LT 12 & LT 16 Series 2 Lawn Tractors Modell: Jahr:

CLUTCH, BRAKE & TRANSMISSION CONTROLS



MANUAL #06514 (2/86)

12

LT16 & LT12 SERIES 2

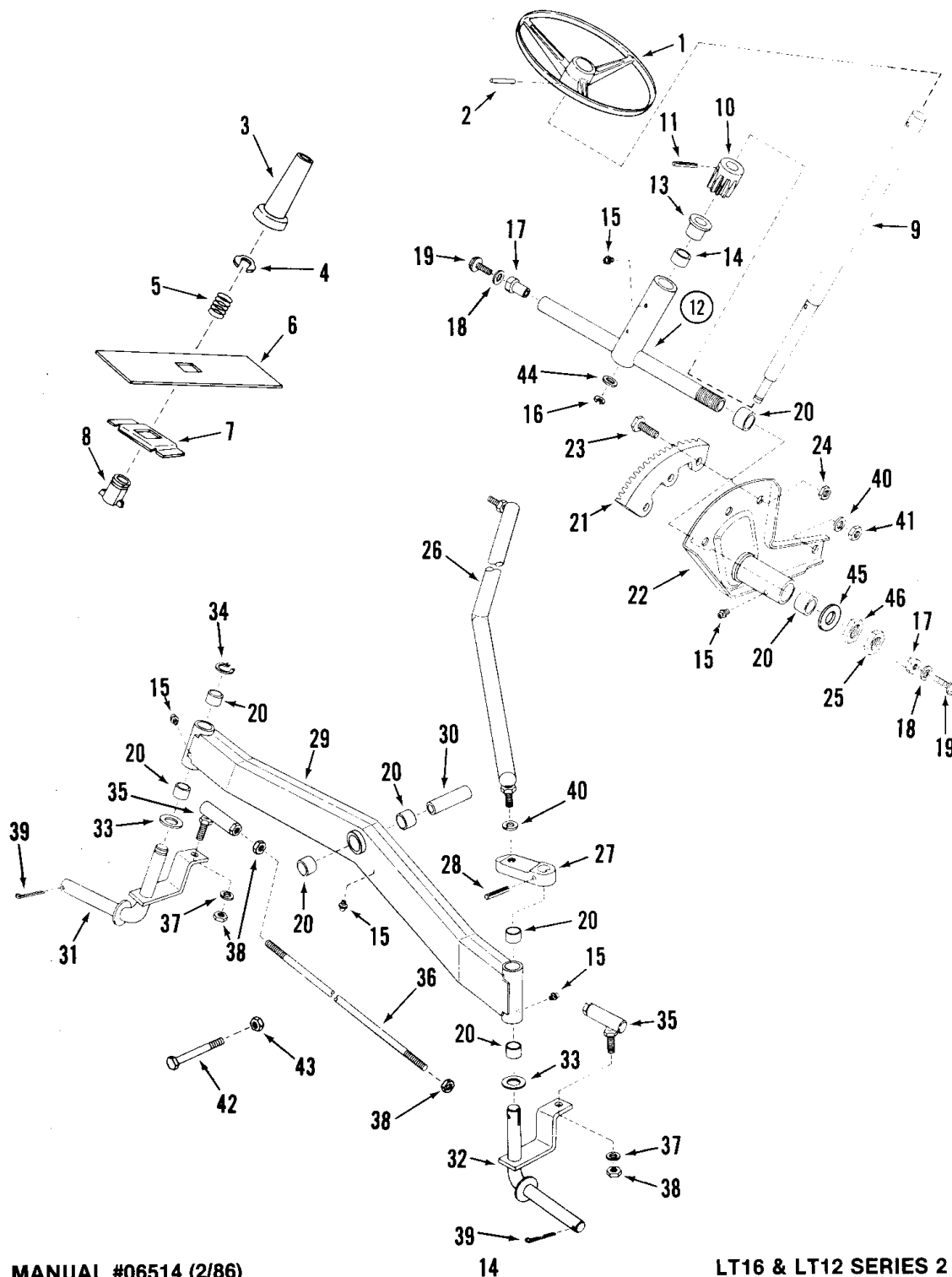
Traktor Bezeichnung: LT 12 & LT 16 Series 2 Lawn Tractors Modell: Jahr:

CLUTCH, BRAKE & TRANSMISSION CONTROLS

ITEM	PART NO.	DESCRIPTION
1	4-0494	SHIFTER, Transmission
2	1-4501	KNOB, Shifter
3	4-0486	PIVOT, Shift
4	1-4442	SPRING, Shift Detent
5	5-1610	ARM, Shifter (Includes item 39)
6	1-4441	LINK, Shift-Long
7	3-2257	ARM, Shift Adjusting
8	4-7828	ARM, Shift
9	1-4337	LINK, Shift-Short
10	3-8046	STRAP, Upper Cross
11	3-8100	STRAP, Brake Pivot Support
12	3-8084	STRAP, Lower Cross
13	1-4528	SPRING, Reverse Assist
14	3-2315	RETAINER (PLATE), Clutch Yoke Bushing
15	1-4396	BUSHING, Clutch Ball
16	3-6077	YOKE, Clutch
17	1-4327	BUSHING, Yoke Pivot-Short
18	1-4328	BUSHING, Yoke Pivot-Long
19	1-2661	PAD, Pedal
20	3-6086	PEDAL, Clutch Brake
21	1-4435	BEARING, Sleeve (2)
22	5-1483	BRACKET, Pedal Pivot (Includes two item 21)
23	1-8524	SWITCH, Clutch Interlock
24	4-0514	ARM, Clutch Brake
25	1-4752	SPRING, Clutch Brake
26	1-8711	CABLE, Clutch Brake
27	3-8142	LEVER, Parking Brake
28	1-4754	STUD, Parking Brake
29	1-4755	SLEEVE, Parking Brake
30	3-2324	LEVER, Brake Pivot
31	3-2335	SUPPORT, Brake Pivot
32	4-0493	DRUM, Brake
33	5-7340	BAND, Brake
34	1-4539	CLEVIS-PIN, 3/8x2-9/16
35	1-4538	CLEVIS-PIN, 1/4x1-13/16
36	1-1021	CLEVIS-PIN, 1/4x1-1/4
37	1-3878	ROLL-PIN, 3/16x1-1/4 (2)
38	9-0037	COTTER-PIN, 3/32x3/4 (2)
39	1-3324	FITTING, Lube
40	9-0361	SCREW, 5/16Cx5/8 Flange Self Tap
41	9-0606	LOCKBOLT, 5/16Cx5/8 Hex Flange
42	9-0188	WASHER, 5/16 SAE
43	9-0187	LOCKWASHER, 5/16 Split
44	1-4659	SPRING
45	9-0223	NUT, 5/16-24 Hex
46	9-0595	LOCKBOLT, 5/16Cx3/4 Hex Flange
47	9-0585	LOCKNUT, 5/16C Hex Flange (4)
48	9-0612	LOCKBOLT, 3/8Cx3/4 Hex Washer Flange
49	9-0613	LOCKNUT, 3/8C Hex Flange
50	9-0122	WASHER, 3/8 SAE Flat
51	1-1968	ROLLER, Shift Arm
52	1-0935	WASHER, Shim (2)
53	9-0356	JAM-NUT, 5/8-18
54	3-1036	WASHER, Thrust
55	9-0849	SCREW, #10x1 Self Tap
56	1-1016	BEARING, Nylon (2)
57	9-0539	SCREW, 1/4Cx1/2 Flange Self Tap
58	9-0506	SCREW, Self Tap
59	1-1780	RING
60	9-0477	NUT, 1/4-20 Flange
61	9-0390	WASHER, 3/8 Internal Tooth Lock
62	9-0130	NUT, 3/8-16 Hex
63	9-0222	LOCKNUT, 5/16-24 Hex
64	3-2433	BRACKET, Mounting-Rear Fender (2)
65	3-2446	CLIP, Spring Attachment
66	9-0661	BOLT, 5/16-18x1 Hex Flange Lock
67	1-5291	CLIP, Spring Retainer

Traktor Bezeichnung: LT 12 & LT 16 Series 2 Lawn Tractors Modell: Jahr:

STEERING & FRONT AXLE PARTS



MANUAL #06514 (2/86)

LT16 & LT12 SERIES 2

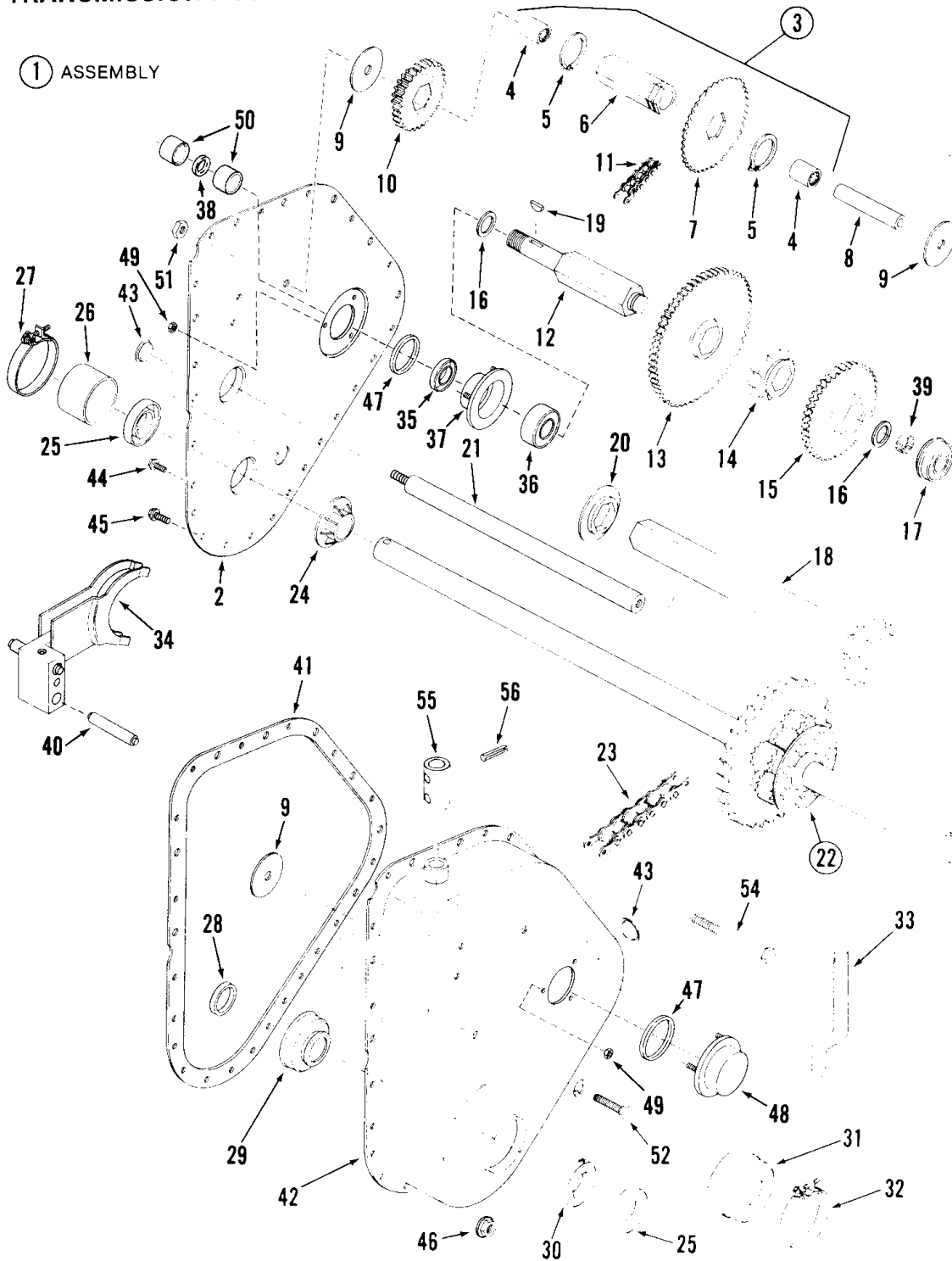
Traktor Bezeichnung: LT 12 & LT 16 Series 2 Lawn Tractors Modell: Jahr:

STEERING & FRONT AXLE PARTS

ITEM	PART NO.	DESCRIPTION
1	1-8589	STEERING WHEEL
2	1-4437	ROLL-PIN
3	1-8601	ACTUATOR, Steering Lock
4	1-4362	RING, Retaining
5	1-4402	SPRING, Actuator
6	1-4430	COVER, Slide
7	3-2272	RISER, Steering Lock
8	1-8583	BUSHING, Steering Lock
9	2-7646	SHAFT, Steering
10	1-8568	PINION, Steering
11	9-0841	ROLL-PIN
12	5-7363	ASSEMBLY, Bearing Support (Includes items 13 & 14) (Current Models)
13	1-4436	BEARING, Flange
14	1-4435	BUSHING
15	1-3864	FITTING, Lube (5)
16	9-0870	SNAP-RING, 5/16
17	1-4358	PIVOT (2)
18	9-0391	LOCKWASHER, 5/16 Internal Tooth (2)
19	9-0793	SCREW, 5/16Cx3/4 Self Tap (2)
20	1-2706	BEARING (2)
21	1-9717	QUADRANT, Steering
22	5-1457	ASSEMBLY, Sector (Includes two item 20, one item 15)
23	9-0072	CAPSCREW, 1/4Cx5/8 Hex Head (3)
24	9-0372	LOCKNUT, 1/4C Hex (3)
25	1-0027	JAM NUT, 3/4-16 Hex
26	1-9724	DRAG-LINK
27	1-8621	ARM, Steering
28	9-0842	ROLL-PIN
29	5-7366	ASSEMBLY, Front Axle (Includes six item 20, three item 15)
30	2-1882	JOURNAL, Axle
31	4-7812	KING-PIN, Right Side
32	4-7813	KING-PIN, Left Side
33	3-1036	WASHER, Thrust (2)
34	1-0746	RING, Retaining (2)
35	1-0745	BALL-JOINT (2)
36	1-4403	TIE-ROD
37	9-0118	LOCKWASHER 3/8 Split (2)
38	9-0155	NUT, 3/8-24 Hex (2)
39	9-0364	COTTER-PIN (2)
40	9-0254	LOCKWASHER, 1/2 Split (2)
41	9-0265	NUT, 1/2-20 Hex (1)
42	9-0826	SCREW, 1/2-20x4" Hex Head Cap
43	9-0393	LOCKNUT, 1/2-20 Thin
44	1-3866	WASHER, 3/8
45	9-0863	WASHER, 3/4 SAE Flat
46	9-0281	NUT, 3/4-16 Hex

Traktor Bezeichnung: LT 12 & LT 16 Series 2 Lawn Tractors Modell: Jahr:

TRANSMISSION ASSEMBLY PARTS



MANUAL #06514 (2/86)

16

LT16 & LT12 SERIES 2

Traktor Bezeichnung: LT 12 & LT 16 Series 2 Lawn Tractors Modell: Jahr:

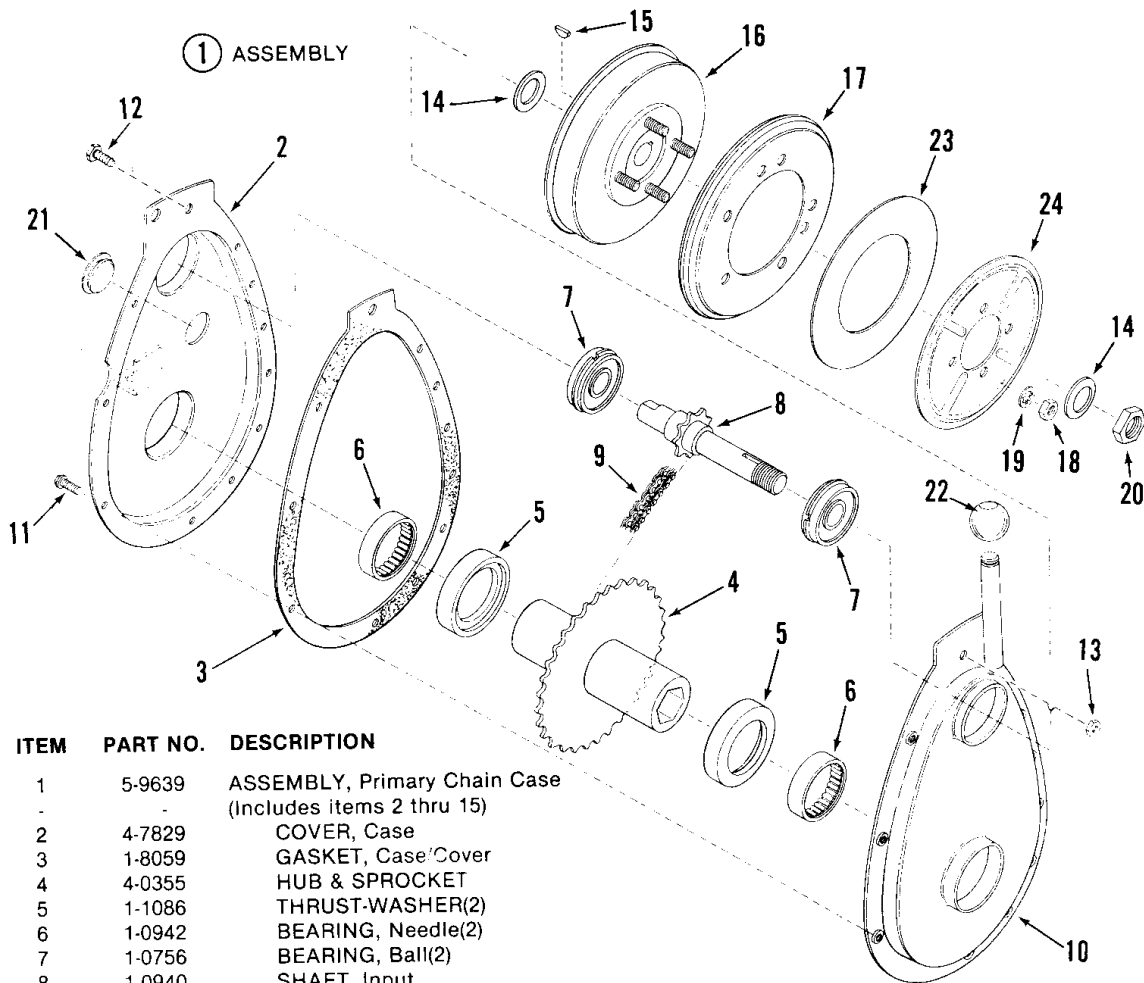
TRANSMISSION ASSEMBLY PARTS

ITEM	PART NO.	DESCRIPTION
1	5-9846	ASSEMBLY, TRANSMISSION (Includes items 2 thru 56)
2	5-7416	COVER, Transmission (Includes items 35,36,37,47 & 49)
3	5-1427	ASSEMBLY, Hex Tube (Short) (Includes items 4 thru 7)
4	1-1178	BEARING, Needle (2)
5	1-4470	RING, Retaining (2)
6	5-1455	TUBE, Hex (Includes two item 4)
7	1-4448	SPROCKET, 46 Tooth (#35)
8	2-1898	RACE, Bearing
9	3-2255	THRUST WASHER
10	4-0499	CLUSTER GEAR
11	1-4490	CHAIN, 56 Pitch (#35)
12	2-7647	SHAFT, Third Reduction
13	1-8596	GEAR, 67 Tooth, 12 Pitch
14	1-8598	SPROCKET, 10 Tooth (#50)
15	1-8597	GEAR, 47 Tooth, 12 Pitch
16	1-0690	SHIM WASHERS (2)
17	1-0756	BEARING (2)
18	5-1584	ASSEMBLY, Drive Hex Tube
19	1-0211	KEY, Woodruff
20	1-0988	SPECIAL WASHER (Hex Insert)
21	5-1607	SHAFT, Drive Tube Support
22	*	DIFFERENTIAL (See Page 19 for Breakdown)
23	1-4444	CHAIN, 42 Pitch (#50)
24	1-4446	SPECIAL WASHER
25	1-1817	OIL SEAL (2)
26	3-1732	CAP, Seal
27	1-1037	CLAMP 1-7/8 Hose
28	2-1899	SPACER, Bearing
29	1-4400	BEARING
30	1-4401	COLLAR, Lock
31	1-4541	CAP, Dust Seal
32	1-4542	CLAMP, For 2.69 Hose
33	3-2309	ROD, (HI-LO Range) Shift
34	5-7330	ASSEMBLY, HI-LO Shifter (See Page 19 for Breakdown)
35	1-5219	SEAL, Oil
36	1-4514	BEARING
37	5-1586	ASSEMBLY, Bearing Retainer
38	1-4508	"O" -RING
39	1-5017	RING, Tolerance
40	2-1901	GUIDE-PIN, Shift
41	1-9962	GASKET, Cover to Case
42	5-7417	ASSEMBLY, Transmission Case (Includes items 17,29,47,48 & 49)
43	1-1024	PLUG, Oil Fill & Check (2)
44	9-0362	SCREW, 1/4Cx5/8 HWF Self Tap (18)
45	9-0584	BOLT, 1/4Cx1/2 HWF (2-Locating)
46	9-0583	LOCKNUT, 1/4C Hex Flange (for item 45)
47	1-5218	O-RING (2)
48	5-1585	ASSEMBLY, Bearing Retainer
49	9-0583	LOCKNUT, 1/4C Hex Flange (6)
50	1-5041	SPACER, Brake Shaft (2)
51	9-0499	LOCKNUT, 3/8-16 Hex (1)
52	9-0134	CAPSCREW, 3/8Cx3/4 Hex Head (1)
53	9-0118	LOCKWASHER, 3/8 Split (1)
54	9-0810	CAPSCREW, 3/8-16x3-1/4
55	2-1903	COUPLING, Shift Lever
56	9-0844	ROLL-PIN

*Not available assembled as shown

Traktor Bezeichnung: LT 12 & LT 16 Series 2 Lawn Tractors Modell: Jahr:

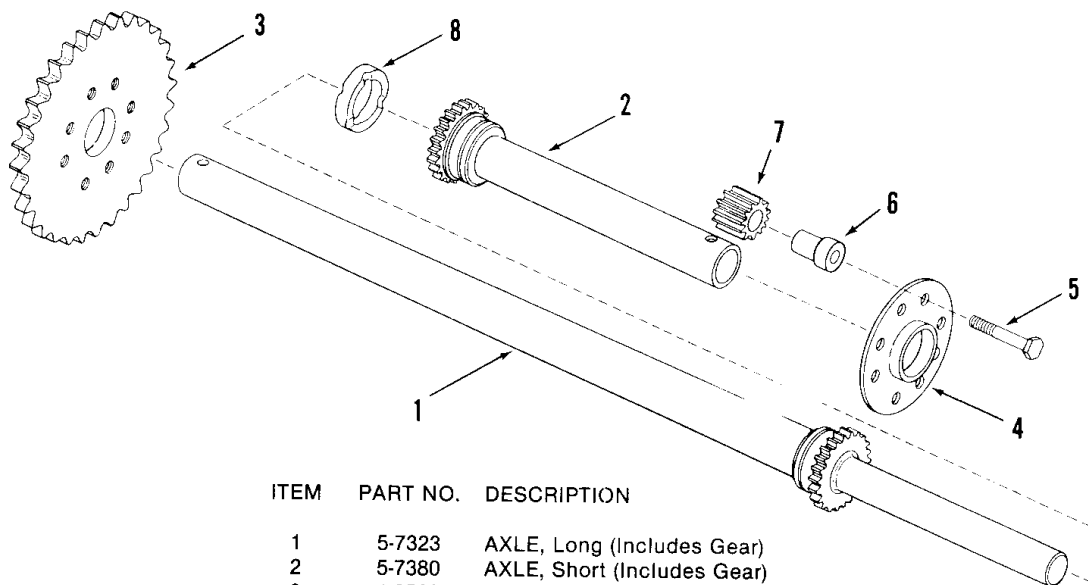
PRIMARY CHAIN CASE



ITEM	PART NO.	DESCRIPTION
1	5-9639	ASSEMBLY, Primary Chain Case (Includes items 2 thru 15)
-	-	COVER, Case
2	4-7829	COVER, Case
3	1-8059	GASKET, Case/Cover
4	4-0355	HUB & SPROCKET
5	1-1086	THRUST-WASHER(2)
6	1-0942	BEARING, Needle(2)
7	1-0756	BEARING, Ball(2)
8	1-0940	SHAFT, Input
9	1-0941	CHAIN
10	4-7830	CASE, Sprocket
11	1-0307	SCREW, #10Cx5/8 Self Tap(10)
12	9-0072	SCREW, 1/4-20x5/8
13	9-0372	LOCKNUT, 1/4-20 Center
14	1-1121	WASHER, Bellville(1)
15	1-0614	KEY, Woodru ff
16	5-7338	HUB, Driven Disc
17	5-7423	DISC, Driven
18	9-0223	NUT, 5/16-24 Hex (4) (Early Models)
18 A	9-0585	LOCKNUT, 5/16-18 Flange (Current Models)
19	9-0391	LOCKWASHER, 5/16 Split (4)(Early Models)
20	9-0356	LOCKNUT, 5/8-18 Hex
21	1-1024	PLUG (Oil fill & check)
22	1-4396	BUSHING, Primary Clutch Ball
23	1-4523	WASHER, Thrust
24	3-2331	PLATE
-	5-7426	ASSEMBLY, Smooth Clutch (Includes items 16,17,18,23 & 24)

Traktor Bezeichnung: LT 12 & LT 16 Series 2 Lawn Tractors Modell: Jahr:

REAR AXLE-DIFFERENTIAL

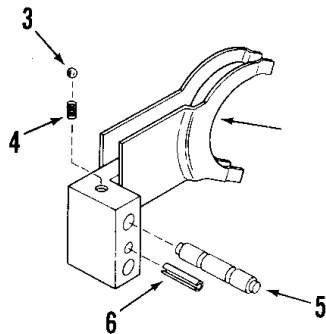


ITEM	PART NO.	DESCRIPTION
1	5-7323	AXLE, Long (Includes Gear)
2	5-7380	AXLE, Short (Includes Gear)
3	1-8599	SPROCKET, 31 Tooth
4	3-8067	PLATE, Differential
5	1-2333	CAPSCREW, Special Lock (8)
6	2-1126	SPACER, Pinion (8)
7	2-1127	PINION GEARS, Differential (8)
8	1-1026	SPACER, Axle

DIFFERENTIAL PART OF TRANSMISSION ASSEMBLY-SEE PAGE 16.

① ASSEMBLY

SHIFTER ASSEMBLY

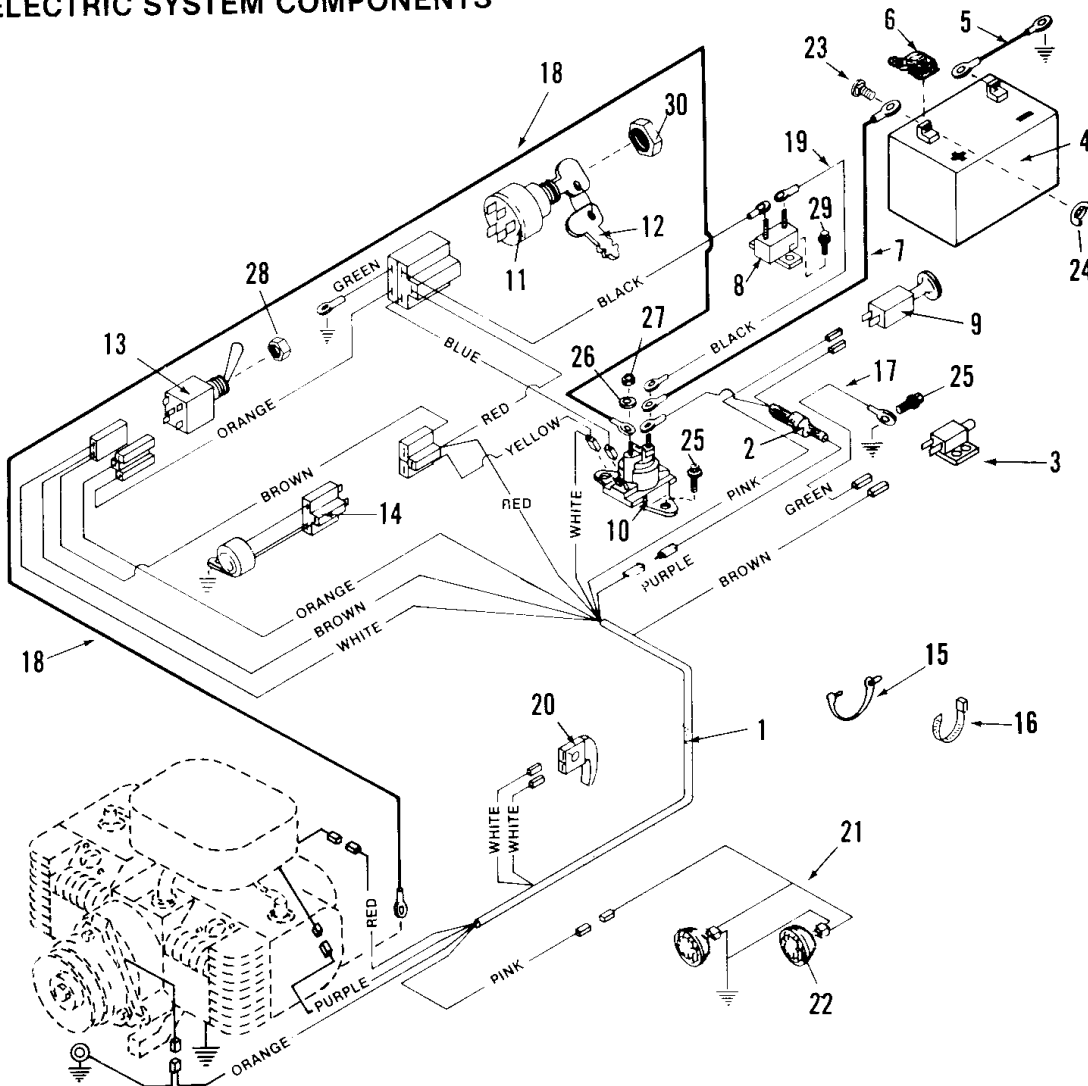


ITEM	PART NO.	DESCRIPTION
1	5-7330	ASSEMBLY, HI-LO SHIFTER
2	4-7833	FORK, Shift
3	1-4469	BALL, Detent
4	1-4500	SPRING, Detent Ball
5	2-1900	GUIDE-PIN, Detent
6	9-0842	ROLL-PIN, 1/4x1-1/4

SHIFTER PART OF TRANSMISSION ASSEMBLY-SEE PAGE 16.

Traktor Bezeichnung: LT 12 & LT 16 Series 2 Lawn Tractors Modell: Jahr:

ELECTRIC SYSTEM COMPONENTS



ITEM PART NO. DESCRIPTION

1	1-9743	HARNESS, Wiring	16	1-2080	TIE, Cable
2	1-8661	HARNESS, Diode	17	1-4870	WIRE, Seat Switch to Grd
3	1-4847	SWITCH, Seat Interlock	18	1-4906	CABLE, Solenoid to Starter (36")
4	6-0618	BATTERY, 12V. 30 Amp Hour	19	1-4478	WIRE, Breaker to Solenoid
5	1-4475	CABLE, Negative (Black)	20	1-8524	SWITCH, Clutch Interlock
6	1-2444	COVER, Positive Term.	21	1-9529	HARNESS, Headlamp
7	1-4476	CABLE, Solenoid to Battery (11")	22	1-8415	HEAD-LAMP (2)
8	1-3941	CIRCUIT-BREAKER	23	9-0074	BOLT, 1/4-20x3/4 Carriage (2)
9	1-8623	SWITCH, Headlamp	24	9-0311	WING-NUT, 1/4-20 (2)
10	1-8604	SOLENOID	25	9-0362	SCREW, 1/4-20x5/8 Self Tap (2)
X 11	1-8562	KEYSWITCH	26	9-0053	L*WASHER, 1/4 I.T.
12	1-1138	KEY (Set of 2)	27	9-0063	NUT, Special 1/4-20 Hex (2)
13	1-9545	SWITCH, PTO	28	1-2686	NUT, Special 1/2-27 Hex
14	1-8571	MODULE, Interlock	29	9-0307	SCREW, 10Cx1/2 Self-Tap (2)
15	1-4451	TIE, Wire	30	1-2685	NUT, 5/8-32 Hex

MANUAL #06514 (2/86)

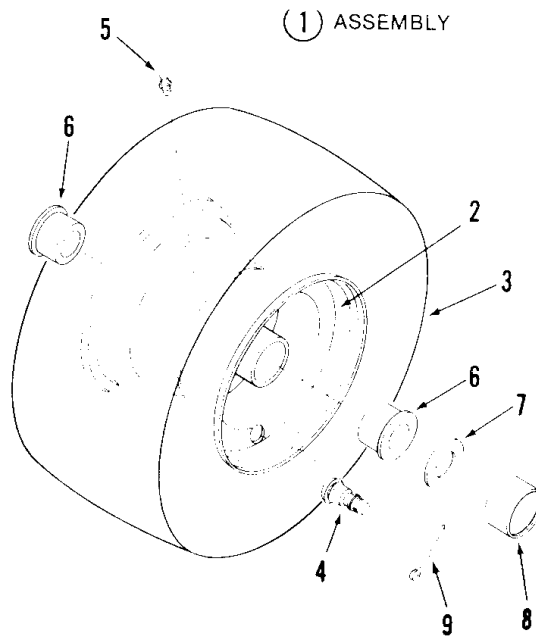
20

LT16 & LT12 SERIES 2

Traktor Bezeichnung: LT 12 & LT 16 Series 2 Lawn Tractors Modell: Jahr:

FRONT WHEELS

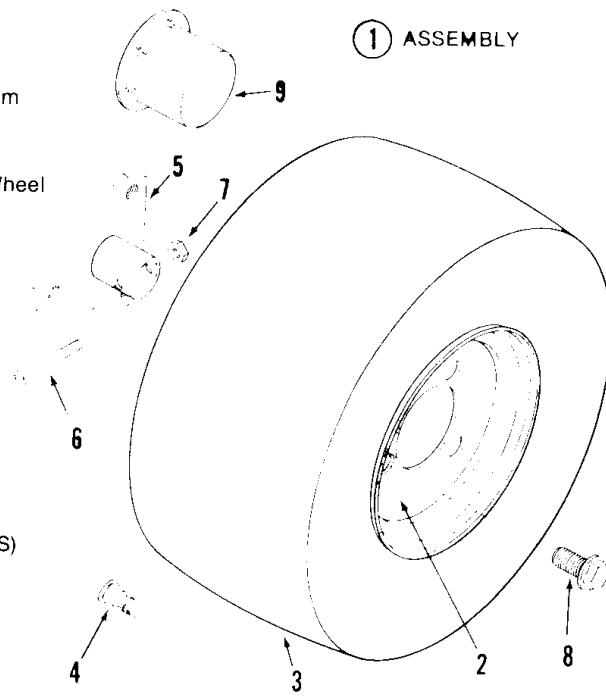
ITEM	PART NO.	DESCRIPTION
1	5-1372	ASSEMBLY, Front Tire & Rim (Includes items 2,3,4,)
2	1-9718	Rim, L ⁷ ø Front Wheel
3	1-4350	TIRE, 15x6.00x6
4	1-2234	VALVE, Air
5	1-3876	FITTING, Lube
6	1-4483	BEARING, Wheel (2)
7	3-2027	WASHER
8	1-1022	COVER, Dust
9	9-0364	COTTER-PIN



* (Rim Includes one item 5 & two item 6)

REAR WHEELS

ITEM	PART NO.	DESCRIPTION
1	5-1606	ASSEMBLY, Rear Tire & Rim (Includes items 2,3,4,)
2	1-9777	RIM, LT16 Rear Wheel
3	1-5326	TIRE, 21x7.00x10
4	1-2234	VALVE, Air
5	4-0529	HUB, Rear Wheel
6	1-1013	BOLT, Tapered
7	1-1201	NUT, 5/16-24 Lock
8	9-0367	BOLT, Lug (1/2-20x3/4 HHCS)
9	1-5266	HUB-CAP



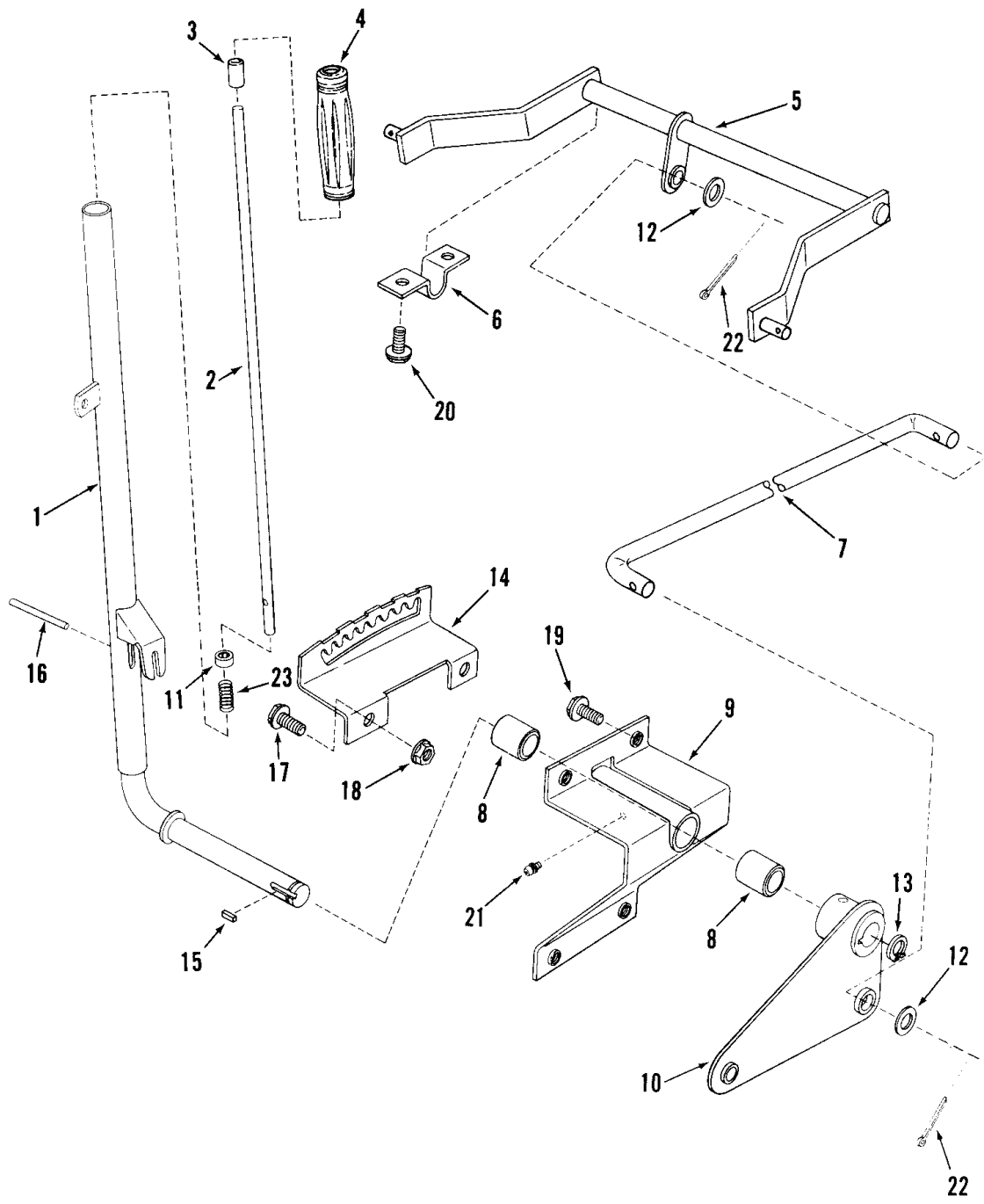
LT16 & LT12 SERIES 2

21

(2/86) MANUAL #06514

Traktor Bezeichnung: LT 12 & LT 16 Series 2 Lawn Tractors Modell: Jahr:

IMPLEMENT LIFT PARTS



MANUAL #06514 (2/86)

22

LT16 & LT12 SERIES 2

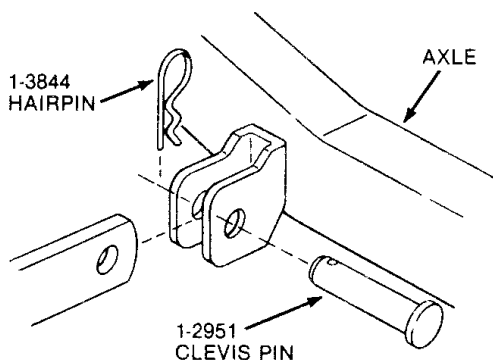
Traktor Bezeichnung: LT 12 & LT 16 Series 2 Lawn Tractors Modell: Jahr:

IMPLEMENT LIFT PARTS

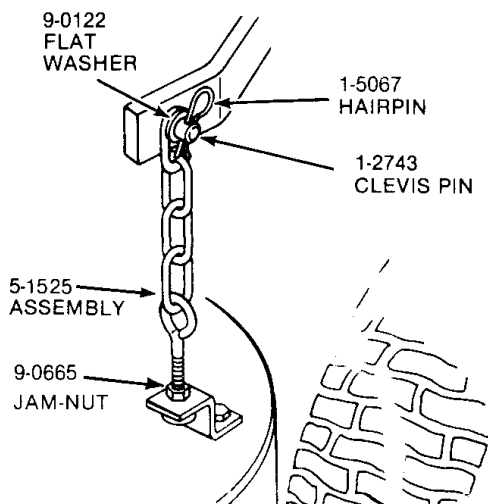
ITEM	PART NO.	DESCRIPTION
1	4-7868	ARM, Implement Lift Lever
2	3-2435	ROD, Lift Lever
3	1-4361	CAP, Lift Release
4	1-3948	GRIP, Handle
5	4-9725	ARM, Rear Lift
6	3-2239	BRACKET, Hanger (2)
7	3-2266	LIFT-ROD
8	1-8289	BEARING, Sleeve (2)
9	5-1523	PIVOT ASSY, Lift Lever (Includes two item 8 & one item 21)
10	4-7806	LEVER-ARM
11	1-5019	PLUG, Rod
12	9-0250	WASHER, 1/2 SAE (2)
13	1-5020	RING, Retaining
14	3-8063	QUADRANT, Lift Lever
15	1-3250	KEY, 1/4x1 Square
16	9-0881	PIN, 3/16x2
17	9-0612	BOLT, 3/8C x 3/4 Hex Flange Lock (2)
18	9-0613	LOCKNUT, 3/8C Hex
19	9-0361	SCREW, 5/16Cx5/8 HW Self Tap (4)
20	9-0506	SCREW, 3/8Cx1/2 HW Self Tap (4)
21	1-3864	FITTING, Lube
22	9-0041	COTTER PIN, 1/8x1 (2)
23	1-4432	SPRING, Lift Handle

DECK HANGER DETAIL

HARDWARE BAG 6-0591 (33,41,48" DECK)



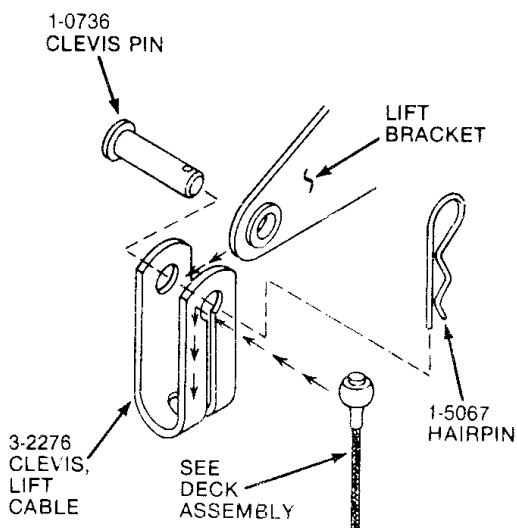
FRONT LIFT ARM



REAR LIFT ARM

LT16 & LT12 SERIES 2

23



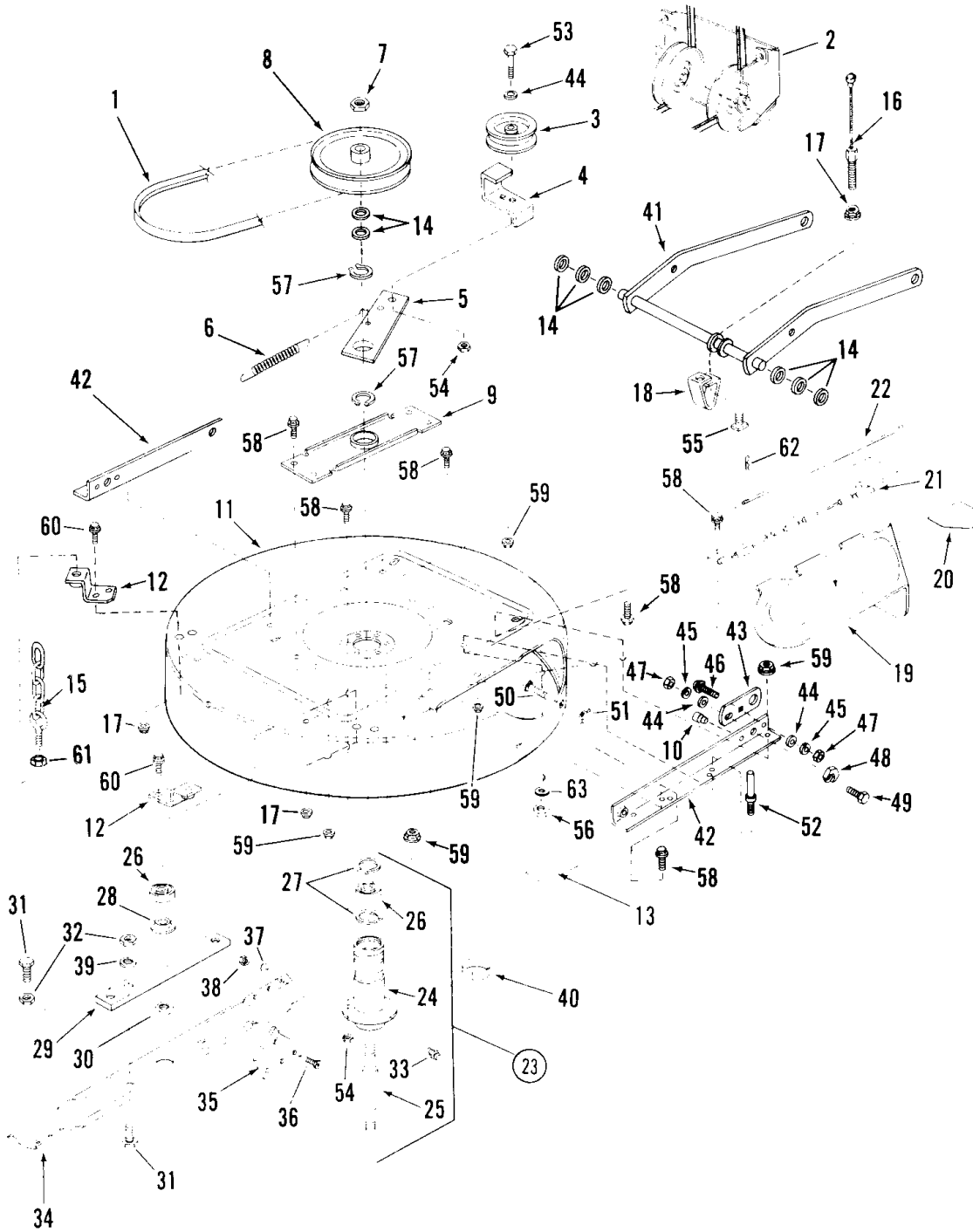
FRONT LIFT BRACKET

(2/86) MANUAL #06514

Traktor Bezeichnung: LT 12 & LT 16 Series 2 Lawn Tractors Modell: Jahr:

33" MOWER

ATTACHMENT



REFER TO PAGE 23 FOR MOWER
TO TRACTOR HANGER DETAILS
LT16 & LT12 SERIES 2

MANUAL #06514 (2/86)

24

Traktor Bezeichnung: LT 12 & LT 16 Series 2 Lawn Tractors Modell: Jahr:

ATTACHMENT

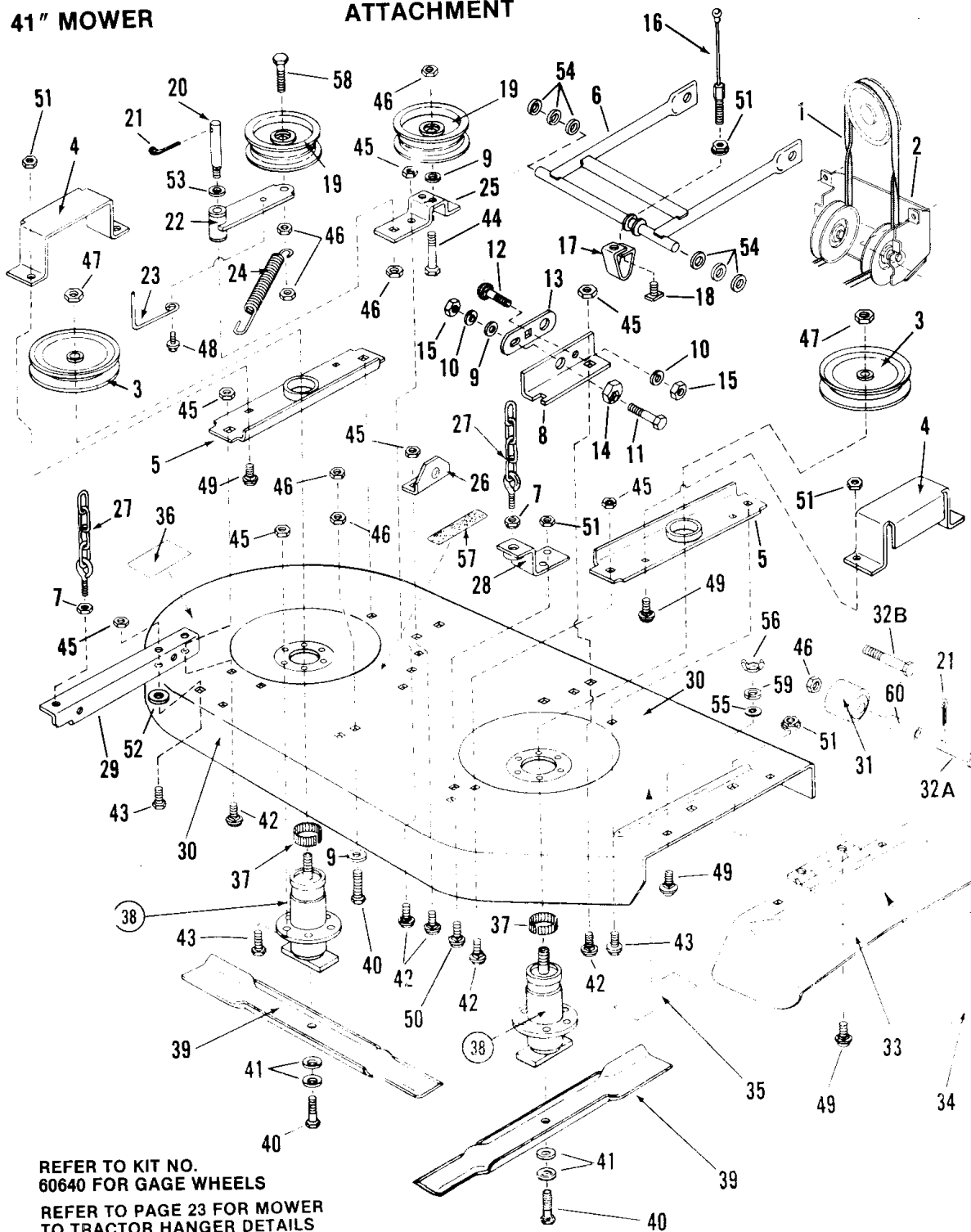
33" MOWER (82646)

ITEM	PART NO.	DESCRIPTION
1	1-4799	BELT, 33" Drive (A101)
2	5-7362	ASSEMBLY, Mule Drive (See Page 30 for parts breakdown)
3	1-8574	PULLEY, Idler (Flat)(4.12 O.D.)
4	3-2341	GUIDE, Belt
5	4-7841	ARM, Idler
6	1-4405	SPRING, Belt tension
7	9-0281	NUT, 3/4-16 Hex Jam
8	1-8581	PULLEY, 8" O.D.
9	3-8018	BRACE, Spindle
10	1-4756	BUMPER BUTTON
11	3-5068	DECK, 33" Cutter
12	5-1533	ASSEMBLY, Bracket Rear Lift (2)
13	1-4416	DECAL, Caution (Deflector-Adapter)
14	1-0935	WASHER, Shim (2)
15	5-1525	ASSEMBLY, Bolt-Chain (2)
16	1-4355	CABLE, Front Lift
17	9-0585	LOCK NUT, 5/16-18 Hex Flange (5)
18	3-8043	BRACKET, Front Lift Hanger
19	5-1456	DEFLECTOR (Includes item 20)
20	1-3871	DECAL, Danger (Cut Finger)
21	3-9586	HINGE, Side Chute
22	3-2323	PIN, Hinge
23	5-9619	ASSEMBLY, Spindle (Includes Items 24 thru 33)
24	5-1529	HOUSING, Spindle (Includes Item 33)
25	2-7631	SPINDLE, 33" Mower Deck
26	1-3313	BEARING, Spindle (2)
27	1-2491	RING, Retaining
28	1-4407	WASHER, Spindle
29	3-7751	HOLDER, Blade
30	9-0356	NUT, 5/8-18 Hex Lock
31	9-0392	SCREW, 1/2-20x1 Hex Head Cap (Grade 5) (4)
32	9-0559	JAM-NUT, 1/2-20 Hex (4)
33	1-0817	FITTING, Lube (2)
34	1-9523	BLADE, 33" Cutter Deck
35	6-0480	KIT, Air Lift (Includes two 3-7723 and six each items 36, 37, 38)
36	9-0228	SCREW, 5/16-24 Machine (6)
37	9-0391	LOCKWASHER, 5/16-24 Hex (6)
38	9-0223	NUT, 5/16-24 Hex (6)
39	9-0509	LOCKWASHER, 1/2 Intern (2)
40	1-2670	RING, Tolerance
41	4-7870	WELDMENT, Front Lift Arm
42	3-8194	RAIL-33
43	3-2432	LINK-ADJUSTMENT
44	9-0122	WASHER, 3/8 SAE (3)
45	9-0118	LOCKWASHER, 3/8 Split (2)
46	9-0850	CARRIAGE BOLT, 3/8-16x3/4
47	9-0130	NUT, 3/8-16 Hex (2)
48	1-5012	RING, Adjustment
49	9-0563	CAPSCREW, 3/8-16x1" Hex Head (2)
50	9-0001	BOLT, 5/16-18x3/4 Carriage (Short Neck)
51	9-0492	WING-NUT, 5/16-18
52	1-4583	STUD, Deck Stop
53	9-0164	SCREW, 3/8-24x1-1/2 Hex Head Cap
54	9-0289	LOCKNUT, 3/8-24 Hex
55	9-0388	T-NUT, 5/16-18
56	9-0155	NUT, 3/8-24 Hex (2)
57	1-0740	RING, Retaining (2)
58	9-0612	LOCKBOLT, 3/8-16x3/4 Hex Flange (17)
59	9-0613	LOCKNUT, 3/8-16 Hex Flange (17)
60	9-0721	LOCKBOLT, 5/16-18x1/2 Hex Flange (Grade 5) (4)
61	9-0665	NUT, 3/8-16 Hex Jam (2)
62	1-5067	PIN, Hair Cotter
63	9-0390	LOCKWASHER, 3/8 Internal Tooth

Traktor Bezeichnung: LT 12 & LT 16 Series 2 Lawn Tractors Modell: Jahr:

41" MOWER

ATTACHMENT



REFER TO KIT NO.
60640 FOR GAGE WHEELS
REFER TO PAGE 23 FOR MOWER
TO TRACTOR HANGER DETAILS

MANUAL #06514 (2/86)

26

LT16 & LT12 SERIES 2

Traktor Bezeichnung: LT 12 & LT 16 Series 2 Lawn Tractors Modell: Jahr:

ATTACHMENT

41" MOWER (82706)

ITEM	PART NO.	DESCRIPTION
1	1-4800	BELT 41",Drive (A137)
2	5-7362	ASSEMBLY, Mule Drive (See Page 30 for parts breakdown)
3	1-4397	PULLEY, 5-3/4 O.D. (2)
4	3-8080	GUARD, Pulley (2)
5	3-8078	BRACE, Spindle (2)
6	4-9724	WELDMENT, Front Lift Arm
7	9-0665	JAM-NUT, 3/8-16 Hex (2)
8	3-8181	BRACKET, Right Front
9	9-0122	WASHER, 3/8 SAE (3)
10	9-0118	LOCKWASHER, 3/8 Split
11	9-0563	CAPSCREW, 3/8-16x1" Hex Head
12	9-0850	CARRIAGE BOLT, 3/8-16x3/4
13	3-2432	LINK, Adjustment
14	1-5012	RING, Adjustment
15	9-0130	NUT, 3/8-16 Hex (2)
16	1-4355	CABLE, Front Lift
17	3-8043	BRACKET, Front Lift Arm Hanger
18	9-0388	T-NUT, 5/16-18
19	1-8585	PULLEY, 4.1 O.D. (2)
20	1-4408	STUD, Idler (3/8-24)
21	9-0041	COTTER-PIN, 1/8x1
22	5-1399	ASSEMBLY, Idler Arm (includes two #1-4409 bushings & 1-3864 fitting)
23	1-4410	GUIDE, Belt
24	1-4513	SPRING, Idler Arm
25	3-8079	BRACKET, Idler
26	3-2297	BRACKET, Front Left Hanger
27	5-1525	ASSEMBLY, Bolt-Chain (2)
28	5-1532	ASSEMBLY, Bracket Right Rear
29	5-7385	ASSEMBLY, Bracket Left Rear
30	4-9960	MOWER DECK, 41"
31	1-4461	WHEEL, GAGE (2)
32A	1-4472	PIN, 1/2 O.D. (For Gage wheel item 31 on early production) (2)
32B	9-0859	CAPSCREW, 3/8-24x3-3/4 Hex Hd (2)
33	5-1401	DEFLECTOR, (Side Chute)(Includes Decal item 34)
34	1-3871	DECAL, DANGER (Cut Finger)
35	1-4852	DECAL, CAUTION (Deflector in Place, etc.)
36	1-4853	DECAL, CAUTION (Rotating Blades)
37	1-2670	RING, Tolerance-3/4" (2)
38	5-1473	ASSEMBLY, Spindle (2)-(See page 30 for breakdown)
39	1-9710	BLADE, 21" CUTTER (2)
40	9-0824	CAPSCREW, 3/8-24x1-1/4 Grade 5 Hex Head (3)
41	1-2063	CONE-WASHER (4)
42	9-0136	CARRIAGE BOLT, 3/8-16x3/4 (9)
43	9-0612	LOCK BOLT, 3/8-16x3/4 Hex Flange (9)
44	9-0483	CAPSCREW, 3/8-24x1-3/4 Hex Head
45	9-0613	LOCKNUT, 3/8-16 Hex Flange (18)
46	9-0289	LOCKNUT, 3/8-24 Hex (8)
47	9-0820	JAM-NUT, 3/4-16 Lock (2)
48	9-0741	SCREW, 1/4-20x5/8 Self Tap (1)
49	9-0799	CARRIAGE BOLT, 5/16-18x5/8 (8)
50	9-0721	LOCK BOLT, 5/16-18x1/2 Flange (2)
51	9-0585	LOCKNUT, 5/16-18 Hex Flange (9)
52	9-0600	WASHER, 7/16 SAE
53	9-0183	WASHER, 5/8 SAE
54	1-0935	WASHER, Spacer (4)
55	1-1791	RETAINER, 5/16 Bolt (2)
56	9-0375	WING-NUT, 5/16-18 (2)
57	1-2929	PAD
58	9-0167	SCREW, 3/8-24x2 Grade 5 Hex Head Cap
59	9-0187	LOCKWASHER, 5/16 Split (2)
60	1-4660	SPACER, (2) (Use with item 32B)

LT16 & LT12 SERIES 2

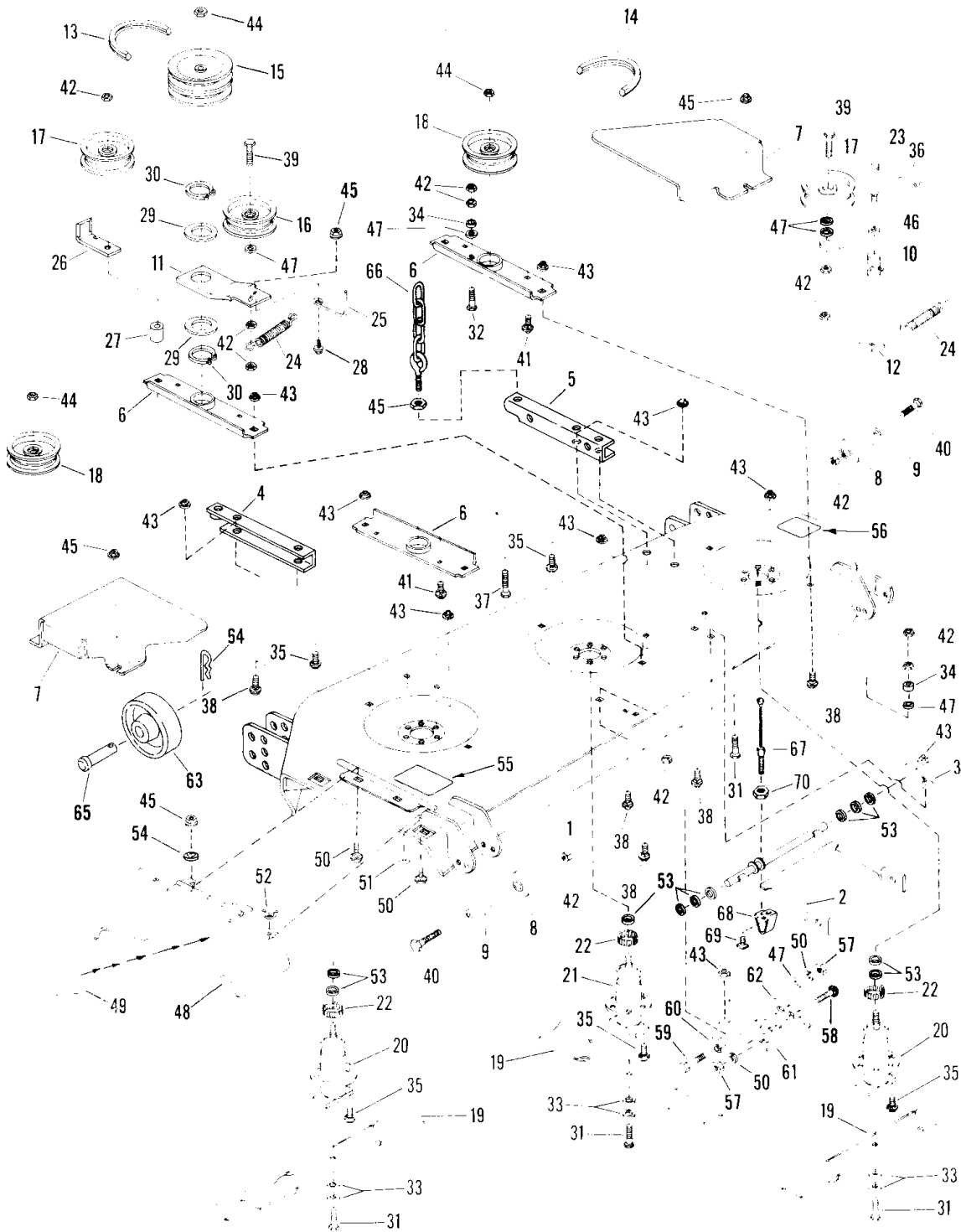
27

(2/86) MANUAL #06514

Traktor Bezeichnung: LT 12 & LT 16 Series 2 Lawn Tractors Modell: Jahr:

48" MOWER

ATTACHMENT



MANUAL #06514 (2/86)

28

LT16 & LT12 SERIES 2

Traktor Bezeichnung: LT 12 & LT 16 Series 2 Lawn Tractors Modell: Jahr:

ATTACHMENT

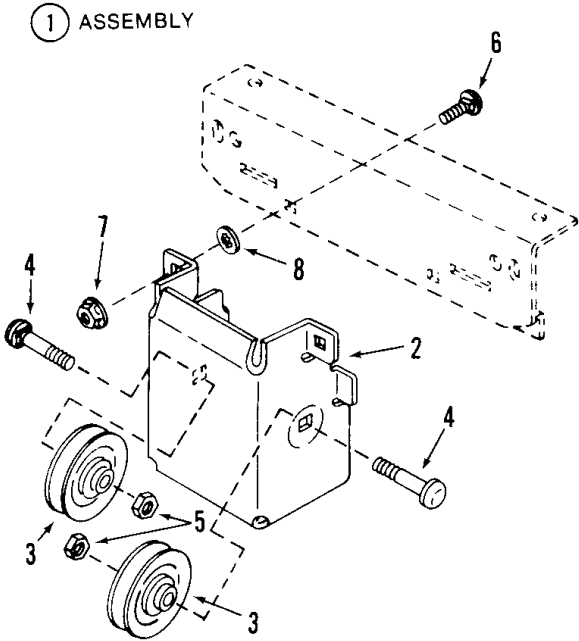
48" MOWER (82726)

ITEM	PART NO.	DESCRIPTION	
1	4-9961	DECK STRUCTURE - 48"	Bitte faxen Sie mir durch, welchen Keilriemen Sie benötigen
2	4-9724	WELDMENT- FRONT LIFT ARM	
3	3-2297	BRACKET FRONT HANGER	
4	5-7384	SUPPORT - REAR RIGHT	
5	5-7383	SUPPORT - REAR LEFT	
6	3-8078	BRACE - SPINDLE (3)	
7	3-5054	GUARD - PULLEY (2)	
8	1-4661	ROLLER (2)	
9	1-4660	SPACER (2)	
10	5-1475	IDLER ARM ASSEMBLY	
11	3-8156	IDLER ARM - CENTER	
12	1-4805	WASHER - SQUARE	
13	1-4801	V-BELT, DRIVE-A92	
14	1-4525	V-BELT, DECK-AA105	
15	1-4545	PULLEY - DOUBLE - 5-4 3/4	
16	1-8585	PULLEY, IDLER - FLAT (4.8 O.D.)	
17	1-8651	PULLEY, IDLER - V (4 1/2 O.D.) (2)	
18	1-4544	PULLEY, 4 3/4 O.D. (2)	
19	1-9733	BLADE - 16.5 (3)	
20	5-1473	SPINDLE ASSEMBLY (2) (See page 30 for breakdown)	
21	5-1528	SPINDLE ASSEMBLY (See page 31 for breakdown)	
22	1-2670	TOLERANCE RING - 3/4 (3)	
23	1-4408	IDLER STUD	
24	1-4513	SPRING (2)	
25	1-4410	GUIDE - BELT	
26	3-2368	GUIDE - BELT	
27	2-1945	SPACER	
28	9-0788	CARRIAGE BOLT, 5/16-18x3/4" Shortneck	
29	1-4795	WASHER - PLASTIC (2)	
30	1-0740	RETAINING RING (2)	
31	9-0824	SCREW, CAP- HEX HEAD 3/8-24x1 1/4 (4)	
32	9-0164	SCREW, CAP- HEX HEAD 3/8-24x1 1/2	
33	1-2063	WASHER-CONE (6)	
34	1-4527	SPACER (2)	
35	9-0612	FLANGE L BOLT, 3/8-16x3/4 (13)	
36	9-0041	COTTER PIN 1/8x1	
37	9-0169	SCREW, CAP-HEX HEAD 3/8-24x2 1/2	
38	9-0136	CARRIAGE BOLT 3/8-16x3/4 (9)	
39	9-0167	SCREW, CAP-HEX HEAD 3/8-24x2	
40	9-0859	SCREW, CAP-HEX HEAD 3/8-24x3 3/4 (2)	
41	9-0799	CARRIAGE BOLT 5/16-18x5/8 (8)	
42	9-0289	NUT, HEX-LOCK 3/8-24 (8)	
43	9-0613	NUT, HEX LOCK FLANGE 3/8-16 (22)	
44	9-0820	NUT, LOCK JAM 3/4-16 (3)	
45	9-0585	NUT, HEX-LOCK FLANGE 5/16-18 (4)	
46	9-0183	SAE WASHER 5/8	
47	9-0122	SAE WASHER 3/8 (6)	
48	5-1401	SIDE CHUTE ASS'Y (INCLUDES ITEM 49)	
49	1-3010	DECAL, DANGER	
50	9-0118	WASHER, 3/8 Split Lock (2)	
51	9-0187	LOCKWASHER, 5/16 Split (2)	
52	9-0375	WING-NUT, 5/16-18 (2)	
53	1-0935	WASHER, 3/4 I.D. (7)	
54	1-1791	RETAINER, 5/16 BOLT (2)	
55	1-4852	DECAL, CAUTION	
56	1-4853	DECAL, CAUTION	
57	9-0130	NUT, HEX 3/8-16 (2)	
58	9-0850	CARRIAGE BOLT, 3/8-16x3/4	
59	9-0563	CAPSCREW, 3/8-16x1 HEX HEAD	
60	1-5012	RING, ADJUSTMENT	
61	3-8181	BRACKET, RIGHT FRONT	
62	3-2432	LINK, ADJUSTMENT	
63	1-8445	WHEEL, 6.00" Gage (2)	
64	1-3844	PIN, Hair Cotter (2)	
65	1-4857	PIN, 1/2x3 Clevis (2)	
66	5-1525	ASSEMBLY, Bolt-Chain (2)	
67	1-4355	CABLE, Front Lift	
68	3-8043	BRACKET, Front Lift Hanger	
69	9-0388	T-NUT 5/16-18	
70	9-0665	NUT, 3/8-16 Hex Jam (2)	

Rasenmäher UmweltForst
 Eduard Ruf GmbH
 Wirsingstraße 13
 86154 Augsburg
 Tel. 08 21 / 41 27 21 · Fax 41 49 87

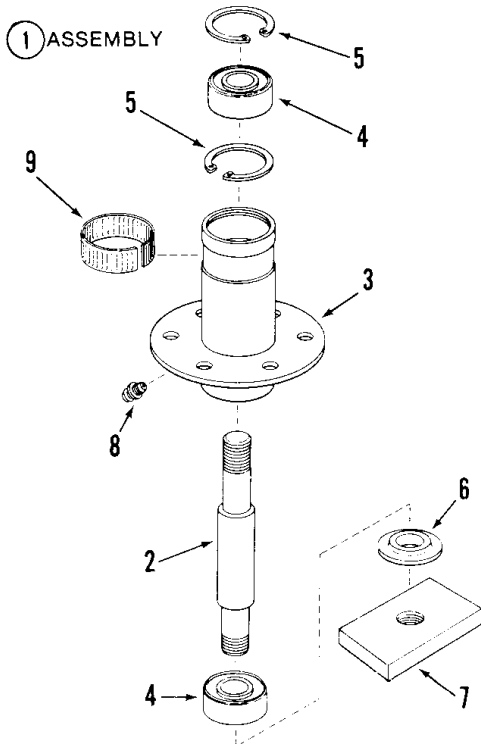
Traktor Bezeichnung: LT 12 & LT 16 Series 2 Lawn Tractors Modell: Jahr:

MULE DRIVE ASSEMBLY



ITEM	PART NO.	DESCRIPTION
1	5-7362	ASSEMBLY, Mule Drive (Includes Items 2 thru 8)
2	4-7860	BRACKET, Mule Drive
3	1-8651	PULLEY, Belt Idler (2)
4	9-0791	CARRIAGE BOLT, 3/8Cx 1-1/2 (2)
5	9-0499	LOCKNUT, 3/8-16 Hex (2)
6	9-0850	CARRIAGE BOLT, 3/8Cx3/4*
7	9-0613	LOCKNUT, 3/8C Hex Flange*
8	1-3847	RETAINER, 3/8 Bolt*

SPINDLE ASSEMBLY (41" & 48" OUTBOARD)



ITEM	PART NO.	DESCRIPTION
1	5-1473	ASSEMBLY, Spindle (Includes Items 2 thru 8)
2	2-7632	SPINDLE
3	5-1472	HOUSING, Spindle
4	1-3313	BEARING, Spindle (2)
5	1-2491	RING, Retaining (2)
6	1-4407	WASHER, Spindle
7	3-2294	HOLDER, Blade
8	1-0817	FITTING, Lube
9	1-2670	RING, Tolerance*

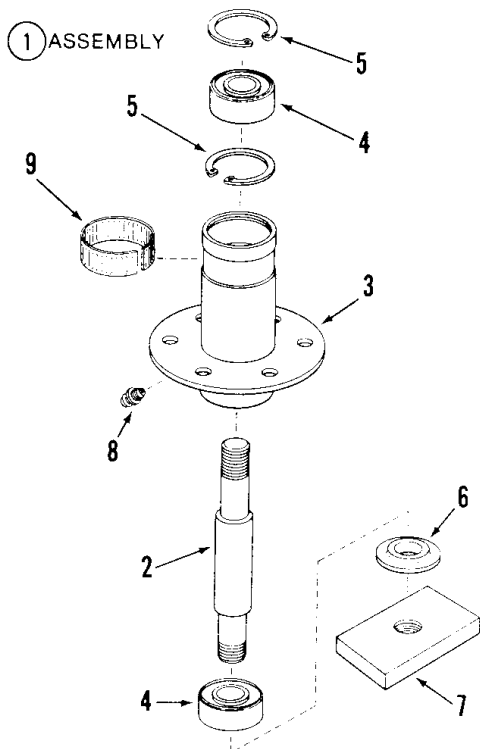
MANUAL #06514 (2/86)

30

*Order separately
LT16 & LT12 SERIES 2

Traktor Bezeichnung: LT 12 & LT 16 Series 2 Lawn Tractors Modell: Jahr:

SPINDLE ASSEMBLY (48" CENTER)

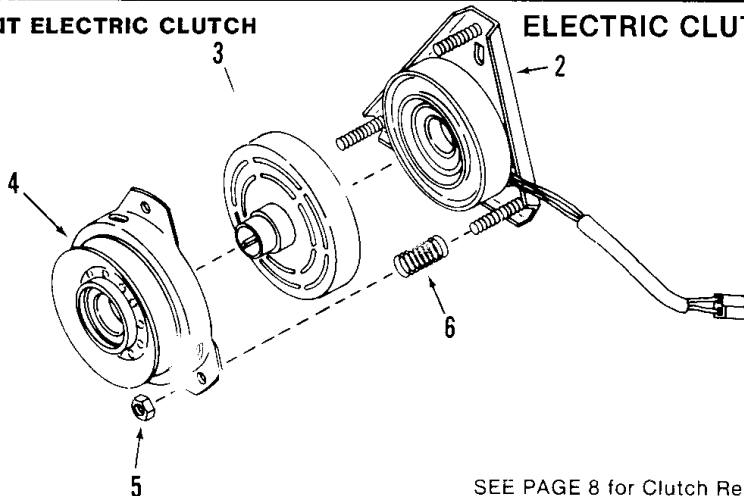


ITEM	PART NO.	DESCRIPTION
1	5-1528	ASSEMBLY, Spindle (Includes Items 2 thru 8)
2	2-7641	SPINDLE
3	5-1527	HOUSING, Spindle
4	1-3313	BEARING, Spindle
5	1-2491	RING, Retaining (2)
6	1-4407	WASHER, Spindle
7	3-2294	HOLDER, Blade
8	1-0817	FITTING, Lube
9	1-2670	RING, Tolerance*

*Order Separately

① KIT ELECTRIC CLUTCH

ELECTRIC CLUTCH ASSEMBLY



SEE PAGE 8 for Clutch Retaining Hardware

ITEM	PART NO.	DESCRIPTION
1	1-9982	KIT, Electric Clutch (Includes Following items for Snapper #1-9982 Warner Electric Model I-5210-3)
2	1-4947	FIELD COIL (Includes Ball Bearing)
3	1-4948	ROTOR
4	1-4949	ASSEMBLY, Arm-Pulley (Includes Ball Bearing)
5	9-0854	LOCKNUT, 3/8-24 Hex (3)
6	1-4950	COIL SPRING (3)

LT16 & LT12 SERIES 2

31

(2/86) MANUAL #06514

Traktor Bezeichnung: LT 12 & LT 16 Series 2 Lawn Tractors Modell: Jahr:

SNAPPER®

**Parts Manual
for
LT16, LT12
SERIES 2
TRACTORS**

SNAPPER POWER EQUIPMENT

McDonough, GA • 30253



MANUAL #06514

(2/86)

Printed in U.S.A.