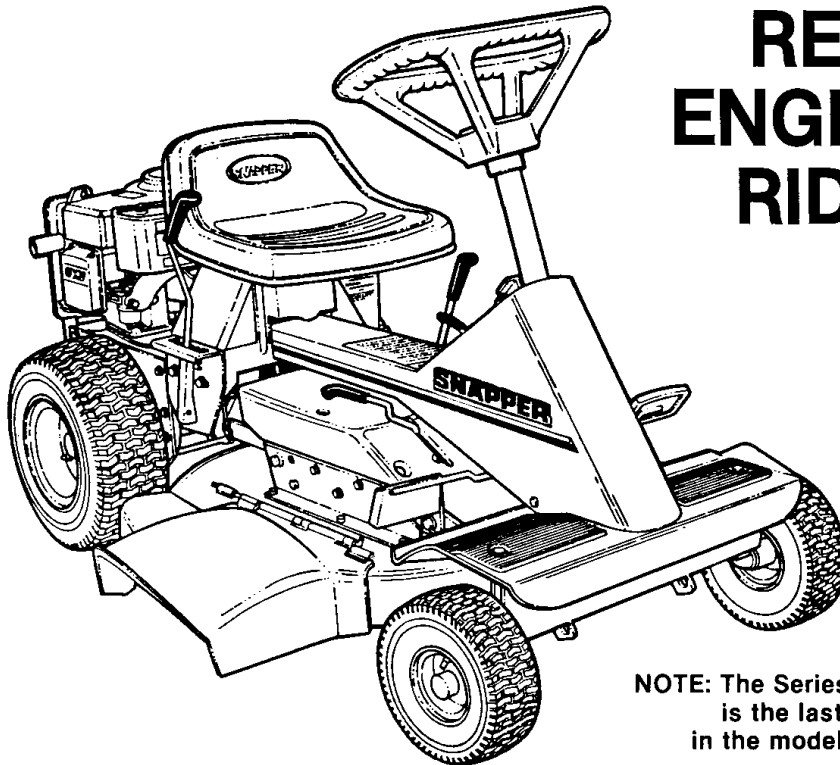


ReitermÄrher Bezeichnung: Series 7, Standard & Commercial Rear Engine Rider Modell: Jahr:

Parts Manual for

SNAPPER[®]

SERIES 7, STANDARD & COMMERCIAL REAR ENGINE RIDER



NOTE: The Series number
is the last numeral
in the model number.

SNAPPER POWER EQUIPMENT
McDonough, GA., 30253 U.S.A.

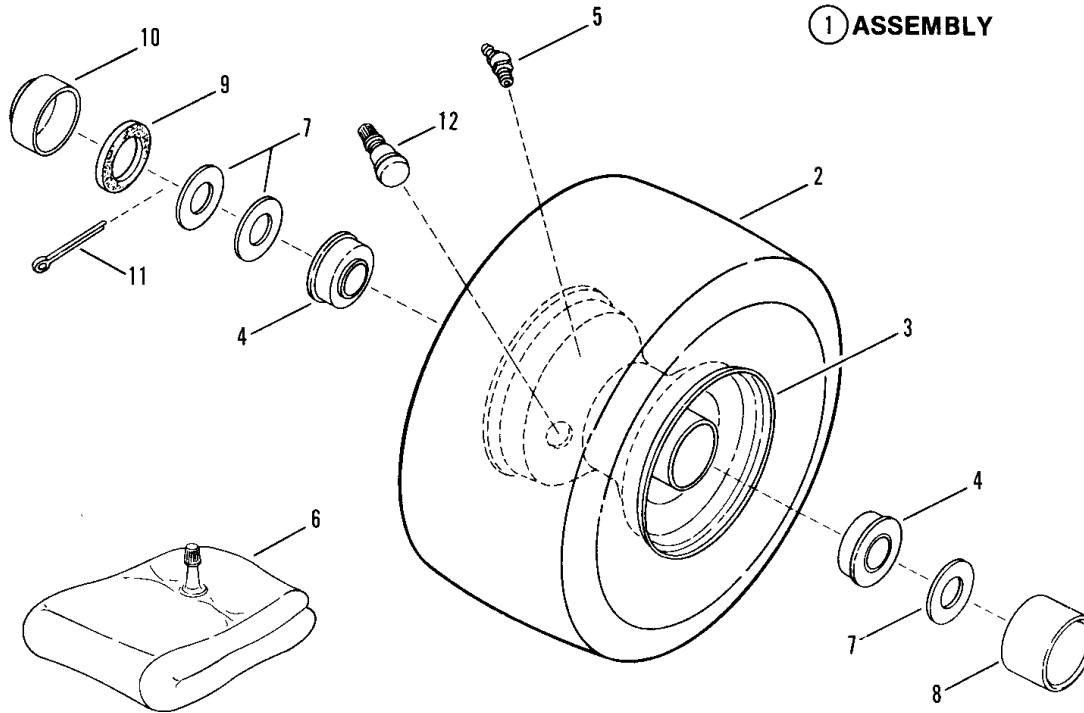


(IR 12/89)

MANUAL NO. 06083

ReitermÃ¶her Bezeichnung: Series 7, Standard & Commercial Rear Engine Rider Modell: Jahr:

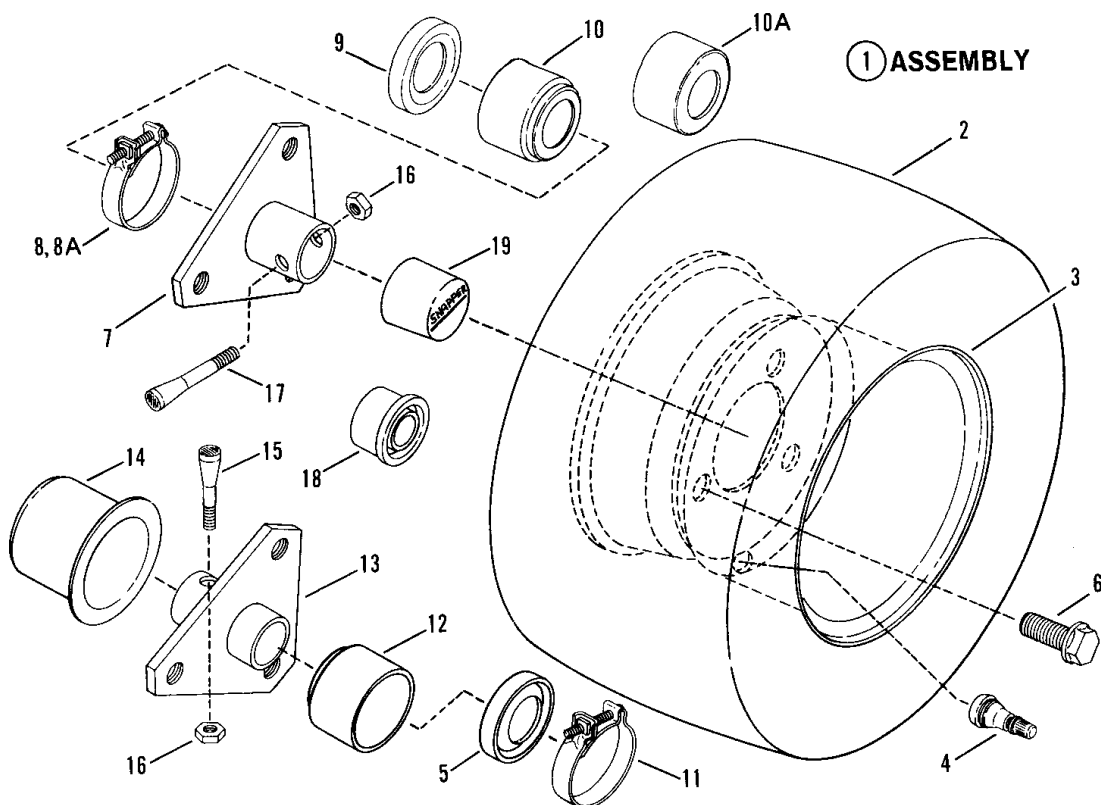
WHEELS - FRONT



ITEM	PART NO.	DESCRIPTION
1	5-9795	ASSEMBLY, Front Tire & Rim (Includes items 2 thru 5)(6.5 & 8 HP Models)
-	5-9963	ASSEMBLY, Front Tire & Rim (Includes items 2 thru 6)(12 & 14 HP Models)
2	2-3828	TIRE, 4.10/3.50x4
3	1-0819	RIM, (For 4.10/3.50x4 Tire) (Includes items 4 & 5)
4	1-1807	BEARING, Ball (2)
5	1-4247	FITTING, Lube
6	1-0821	TUBE, Inner (For 4.10/3.50x4 Tire)
7	1-0935	WASHER, (3)
8	1-1022	HUB-CAP
9	1-1032	SEAL, Felt
10	3-1038	CAP, Dust
11	9-0364	COTTER-PIN
12	1-2234	VALVE, Air (Snap-in)(6.5 & 8 HP Models only)

ReitermÄrher Bezeichnung: Series 7, Standard & Commercial Rear Engine Rider Modell: Jahr:

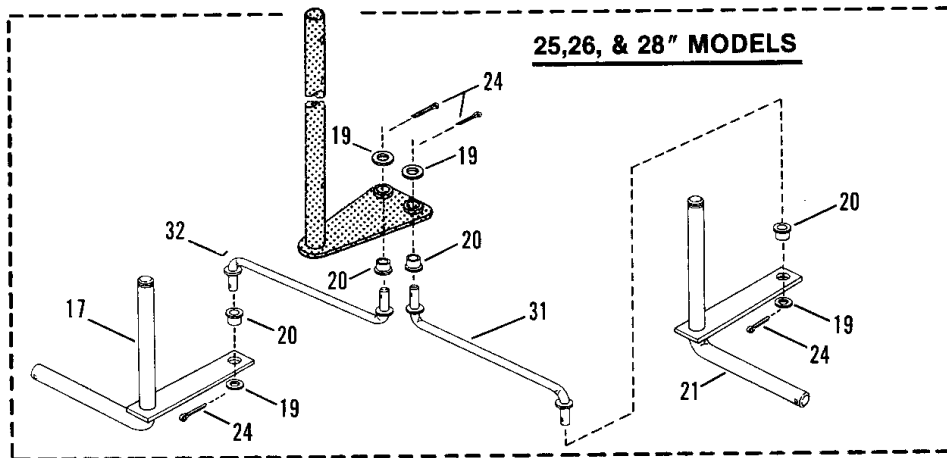
WHEELS - REAR



ITEM	PART NO.	DESCRIPTION
1	5-1953	ASSEMBLY, Rear Tire & Rim (Includes items 2,3,&4)(25 & 26" Models)
-	5-1718	ASSEMBLY, Rear Tire & Rim (Includes items 2,3,&4)(28,30, & 33" Models)
2	1-5968	TIRE, Wide, 16/6.50x8(28,30, & 33" Models)
-	2-3889	TIRE, Std.,16/4.80x8(25 & 26" Models)
3	1-2163	RIM, Wide (For 16/6.50x8 Tire)(28,30 & 33" Models)
-	1-2162	RIM, Std.,(For 16/4.80x8 Tire)(25 & 26" Models)
4	1-2234	VALVE, Air (Snap-in)
5	1-4662	SEAL, Oil Left Hand
6	9-0367	BOLT, 1/2-20x3/4" Lug (6)
7	4-0433	HUB, Rear Wheel, Right Hand
8	1-4542	CLAMP, Right Hand (12 & 14 HP Models)
8A	1-1037	CLAMP, Right Hand (6.5 & 8 HP Models)
9	1-1817	SEAL, Oil, Right Hand
10	1-4541	BOOT, Right Hand(12 & 14 HP Models)
10A	3-1732	BOOT, Right Hand (6.5 & 8 HP Models)
11	1-2332	CLAMP, Left Hand(12 & 14 HP Models)
12	1-4658	BOOT, Left Hand(12 & 14 HP Models)
13	4-0434	HUB, Rear Wheel, Left Hand
14	2-3522	HUB-CAP, Left Hand
15	1-1035	BOLT, 5/16-24x1-5/8" Tapered, Left Hand
16	1-1201	NUT, 5/16-24 Lock
17	1-1013	BOLT, 5/16-24x2" Tapered, Right Hand
18	1-0967	CAP, Dust, Left Hand (6.5 & 8 HP Models)
19	2-3895	HUB, CAP, Right Hand

Reitermodell Bezeichnung: Series 7, Standard & Commercial Rear Engine Rider Modell: Jahr:

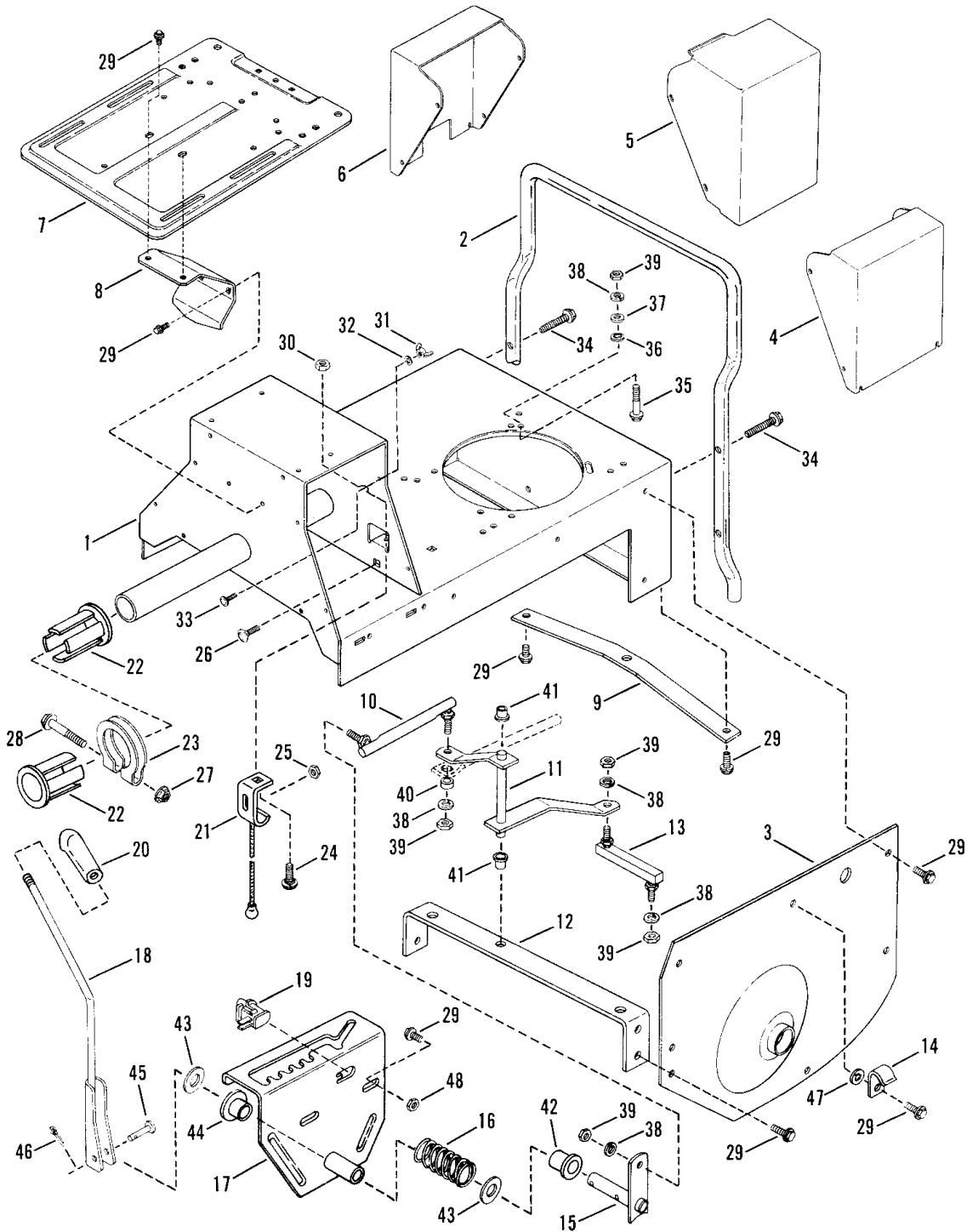
FRONT END STEERING



ITEM	PART NO.	DESCRIPTION
1	5-1941	STEERING WHEEL ASSM'Y. (Includes item 2)
2	2-3781	DECAL, Snapper
3	1-3862	ROLL-PIN, 1/4x1-1/2"
4	4-0636	BRACKET, Clutch/Brake
5	4-0591	ARM, Clutch/Brake
6	2-3821	BOLT, #10-32x1-3/8" Tapered
7	9-0885	NUT, #10-32 Hex Lock
8	2-3667	COVER, Steering Shaft (Foam)
9	2-3671	COVER
10	1-0935	WASHER, 3/4 Flat (8)
11	1-9166	BUSHNG, 3/4", Steering Shaft (2)
12	9-0753	COTTER-PIN, 3/16x1-1/2" (2)
13	4-0592	FRAME, Front (25,26 & 28" Models)
-	4-0589	FRAME, Front (30 & 33" Models)
14	2-3660	PAD, Foot, Right Side Shown (25,26, & 28" Models)
-	2-3663	PAD, Foot, Right Side Shown (30, 33" Models)
-	2-3659	PAD, Foot, Left Side (25,26, & 28" Models)(Not Shown)
-	2-3662	PAD, Foot, Left Side (30 & 33" Models)(Not Shown)
15	1-0746	RING, Retaining (2)
16	1-0986	BEARING (4)
17	4-0361	KING-PIN, Right Side
18	9-0289	NUT, 3/8-24 Hex Lock (2)
19	9-0122	WASHER, 3/8 Flat (4)
20	1-3321	BUSHING (4)
21	4-0362	KING-PIN, Left Side
22	1-0745	BALL-JOINT (2)
23	9-0155	NUT, 3/8-24 Hex (2)
24	9-0365	COTTER-PIN, 1/8-3/4" (2)
25	2-3819	TIE-ROD (2) (30 & 33" Models)
26	4-0590	PEDAL, Clutch/Brake
27	1-0776	RING, Retaining
28	1-1815	PAD, Clutch/Brake Pedal
29	1-9238	CABLE, Clutch/Brake
30	4-0593	SHAFT, Steering
31	1-2933	TIE-ROD, Left Side (25,26, & 28" Models)
32	1-3023	TIE-ROD, Right Side (25,26, & 28" Models)

Reitermodell Bezeichnung: Series 7, Standard & Commercial Rear Engine Rider Modell: Jahr:

MAIN CASE



MANUAL NO. 06083

6

SERIES 7

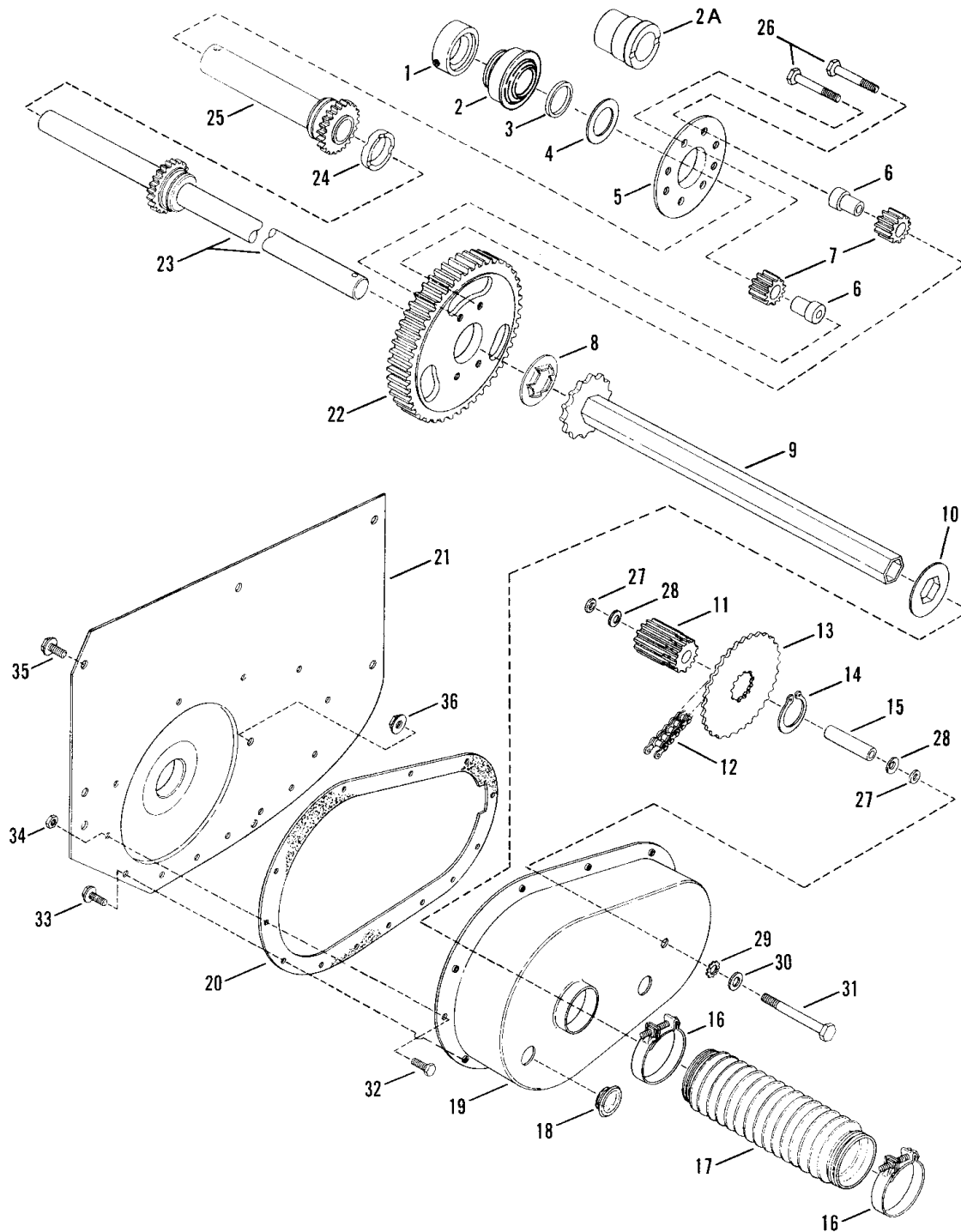
Reitermodell Bezeichnung: Series 7, Standard & Commercial Rear Engine Rider Modell: Jahr:

MAIN CASE

ITEM	PART NO.	DESCRIPTION
1	5-9934	MAIN CASE
2	3-6367	BUMPER, Rear
3	3-7958	FENDER, Left Hand
4	1-6085	COVER
5	1-6084	COVER, Battery
6	1-7074	COVER, Switch
7	3-6332	BASE, Seat Support
8	3-6342	BRACE
9	3-1063	PLATE, Hitch
10	2-3676	LINK, Shift, Long
11	4-0600	ARM, Shift
12	3-7291	BRACE, Cross
13	1-1018	LINK, Shift, Short
14	1-2652	CLIP, Wiring
15	4-0598	ARM, Shift Handle
16	1-0754	SPRING, Shift Handle
17	4-7955	DETENT, Shift
18	4-0599	HANDLE, Shift
19	1-5707	SWITCH, Interlock
20	2-3656	KNOB, Shift Handle
21	1-9165	CABLE, Deck Support
22	2-3647	BUSHING, Main Tube (2)
23	3-2795	CLAMP, Main Tube
24	9-0192	BOLT, 5/16-18x1-1/2" Carriage (2)
25	9-0585	NUT, 5/16-18 Hex Flange Lock (2)
26	9-0799	BOLT, 5/16-18x5/8" Short Neck Carriage (2)
27	9-0480	NUT, 5/16-24 Hex Flange Lock
28	9-0358	SCREW, 5/16-24x2-1/2" Hex Cap
29	9-0361	SCREW, 5/16-18x5/8" Self-Tapping (14)
30	9-0672	NUT, 5/16-18 Hex Flange Lock (2)
31	9-1039	WING-NUT, #10-24 Locking (8)
32	9-1037	RETAINER, Bolt (8)
33	9-0530	BOLT, #10-24x1/2" Carriage (8)
34	9-0484	SCREW, 5/16-18x1-1/2" Self-Tapping (4)
35	9-0242	SCREW, 5/16-24x1-1/2" Hex Head Cap (4)
36	1-1791	RETAINER, Bolt (4)
37	9-0188	WASHER, 5/16" Flat (4)
38	9-0187	WASHER, 5/16" Split Lock (8)
39	9-0223	NUT, 5/16-24 Hex (8)
40	1-1968	ROLLER
41	1-1016	BUSHING, Nylon (2)
42	1-9246	BUSHING, Nylon (2)
43	3-1036	WASHER, Thrust (2)
44	1-9245	BUSHING, Nylon
45	2-3914	CLEVIS-PIN
46	9-0037	COTTER-PIN, 3/32x3/4"
47	9-0391	WASHER, 5/16 Internal Tooth Lock
48	9-0196	NUT, 5/16-18 Hex (2)

Reitermodell Bezeichnung: Series 7, Standard & Commercial Rear Engine Rider Modell: Jahr:

DIFFERENTIAL, R. H. FENDER



MANUAL NO. 06083

8

SERIES 7

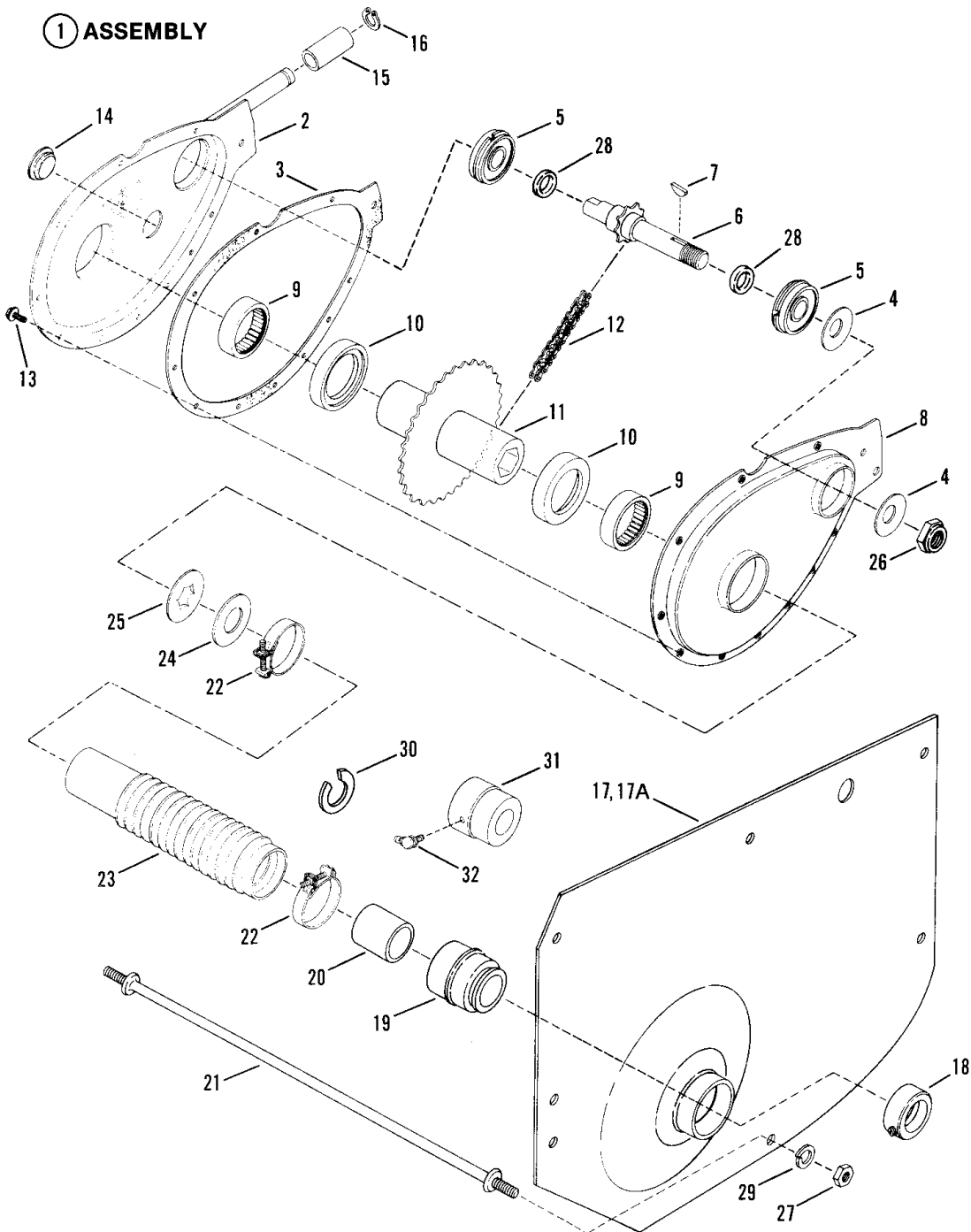
Reitermodell Bezeichnung: Series 7, Standard & Commercial Rear Engine Rider Modell: Jahr:

DIFFERENTIAL, R. H. FENDER

ITEM	PART NO.	DESCRIPTION
1	1-4401	COLLAR, Lock (Includes 5/16Cx5/16" Set Screw #9-0201)(12 & 14 HP Models)
2	1-8822	BEARING, Axle, Right Hand Fender(12 & 14 HP Models)
2A	1-2296	BEARING, Axle, Right Hand Fender (6.5 & 8 HP Models)
3	3-2107	SPACER, Short Axle
4	3-1079	WASHER, Thrust
5	3-8067	PLATE, Differential
6	2-1126	SPACER, Pinion (4)
7	2-1127	PINION GEARS, Differential (4)
8	1-1072	WASHER, Thrust
9	5-1584	ASSEMBLY, Drive Hex Tube
10	1-0988	WASHER, Hex Insert
11	1-0964	GEAR, 11 Teeth, 10 Pitch
12	1-0941	CHAIN, 46 Pitch (#35)
13	2-1129	SPROCKET
14	1-0965	RING, Retaining
15	2-1128	SPACER
16	1-1037	CLAMP, Boot (2)
17	1-7083	BOOT, Oil Seal
18	1-1024	PLUG, Oil Fill & Check (2)
19	3-7279	CASE, Transmission
20	1-8060	GASKET, Transmission Case
21	3-7957	FENDER, Right Hand
22	2-1158	GEAR, 63 Teeth, 10 Pitch
23	4-7763	AXLE, Long (Includes Gear) Use only with Short Axle #5-7352
24	1-1026	SPACER
25	5-7398	AXLE, Short(Includes Gear)Use only with Long Axle #4-7763
26	1-2333	CAPSCREW, 5/16-24x1 5/8" Hex, Special Lock (4)
27	1-1156	O-RING, 5/16" (2)
28	1-1782	WASHER, Belleville (2)
29	9-0395	WASHER, 5/16 External Tooth Lock
30	9-0188	WASHER, 5/16 Flat
31	1-1042	BOLT, 5/16-24x2 5/8" Idler
32	9-0072	SCREW, 1/4-20x5/8" Hex Head Cap (2)
33	9-0362	SCREW, 1/4-20x5/8", Self-Tapping (11)
34	9-0372	NUT, 1/4-20 Hex Lock (2)
35	9-0361	SCREW, 5/16-18x5/8", Self-Tapping (11)
36	1-0969	NUT, 5/16-24 Hex Flange Lock

ReitermÄrher Bezeichnung: Series 7, Standard & Commercial Rear Engine Rider Modell: Jahr:

CHAIN CASE, LH FENDER



MANUAL NO. 06083

10

SERIES 7

Reitermodell Bezeichnung: Series 7, Standard & Commercial Rear Engine Rider Modell: Jahr:

CHAIN CASE, LH FENDER

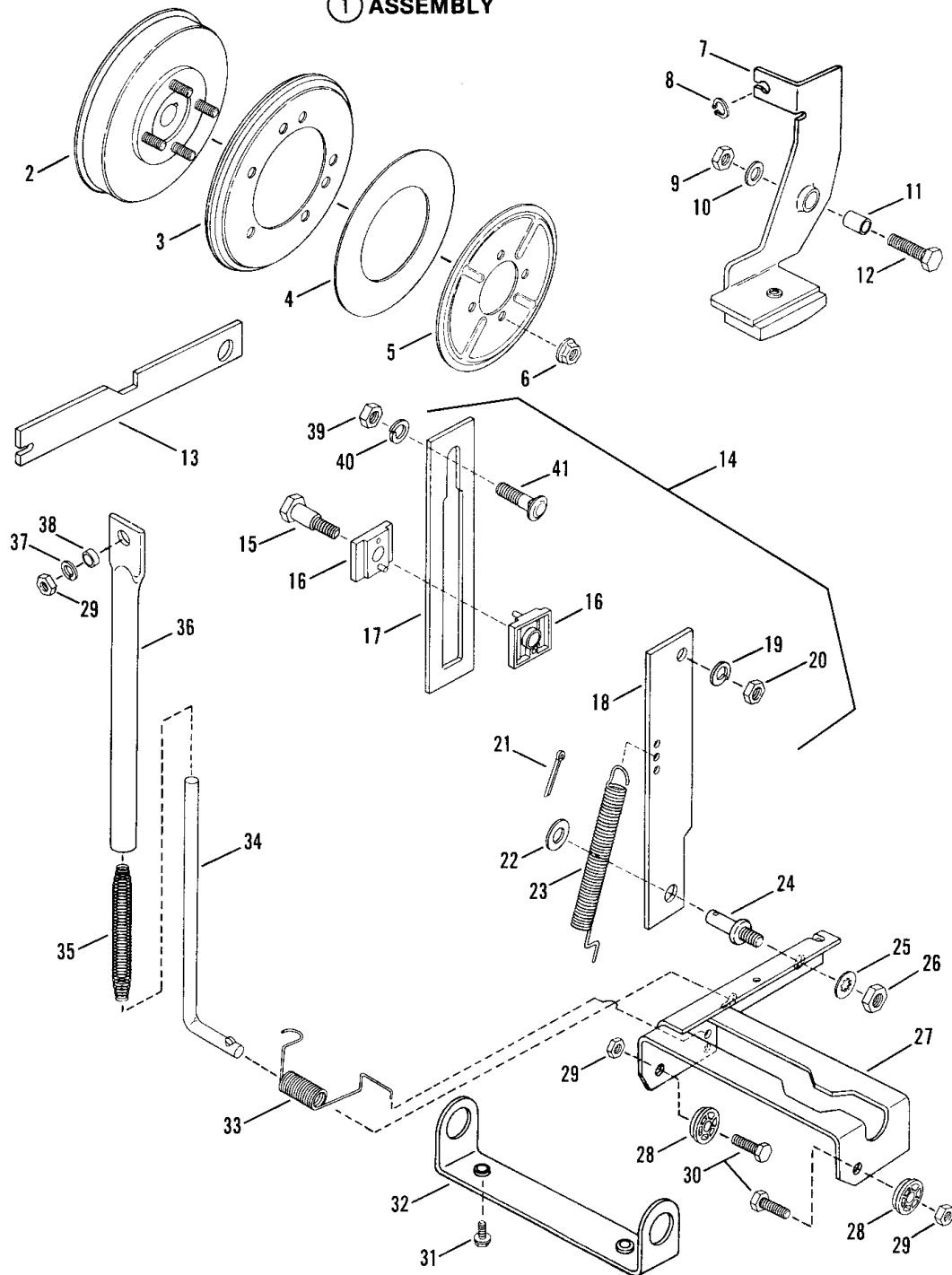
ITEM	PART NO.	DESCRIPTION
1	5-9793	ASSEMBLY, Chain Case (Includes items 2 thru 13)
2	4-7970	CASE, Sprocket
3	1-8059	GASKET, Case-Cover
4	1-1121	WASHER, Belleville (2)
5	1-0756	BEARING, Ball (2)
6	1-8963	SPROCKET & SHAFT
7	1-0614	KEY, Woodruff
8	3-9778	COVER, Chain Case
9	1-0942	BEARING, Needle (2)
10	1-1086	WASHER, Nylon Thrust (2)
11	4-0355	HUB & SPROCKET
12	1-0941	CHAIN
13	9-0307	SCREW, #10-24x5/8" Self-Tapping (10)
14	1-1024	PLUG, Oil Fill & Check
15	2-0908	ROLLER
16	1-0776	RING, Retaining
*17	3-7958	FENDER, Left Hand (12 & 14 HP Models)
17A	3-7285	FENDER, Left Hand (6.5 & 8 HP Models)
18	1-4625	COLLAR, Lock (Includes 1/4Cx1/4" Set Screw #9-0776)
19	1-4624	BEARING, Left Hand Fender (12 & 14 HP Models)
20	3-2114	SPACER, Left Hand (12 & 14 HP Models)
21	1-1070	ROD, Cross-Tie
22	1-1037	CLAMP, Boot (2)
23	1-7084	BOOT, Oil Seal
24	1-1071	WASHER, Thrust Nylon
25	1-1072	WASHER, Thrust
26	9-1062	NUT, 5/8-18 Hex, E.E.S.
27	9-0223	NUT, 5/16-24 Hex
28	1-9260	"O" - RING (2)
29	9-0187	WASHER, 5/16 Split Lock
30	1-2271	WASHER, Shim (As Required)
31	5-0918	BEARING, Left Hand Fender(Incl. item 32)(6.5 & 8 HP Models)
32	1-3324	FITTING, Lube (6.5 & 8 HP Models)

* FENDER ASSEMBLY NO. 5-1451 INCLUDES ITEM NO. 19

Reitermodell Bezeichnung: Series 7, Standard & Commercial Rear Engine Rider Modell: Jahr:

SMOOTH CLUTCH ASSEMBLY

① ASSEMBLY



MANUAL NO. 06083

12

SERIES 7

Reitermodell Bezeichnung: Series 7, Standard & Commercial Rear Engine Rider Modell: Jahr:

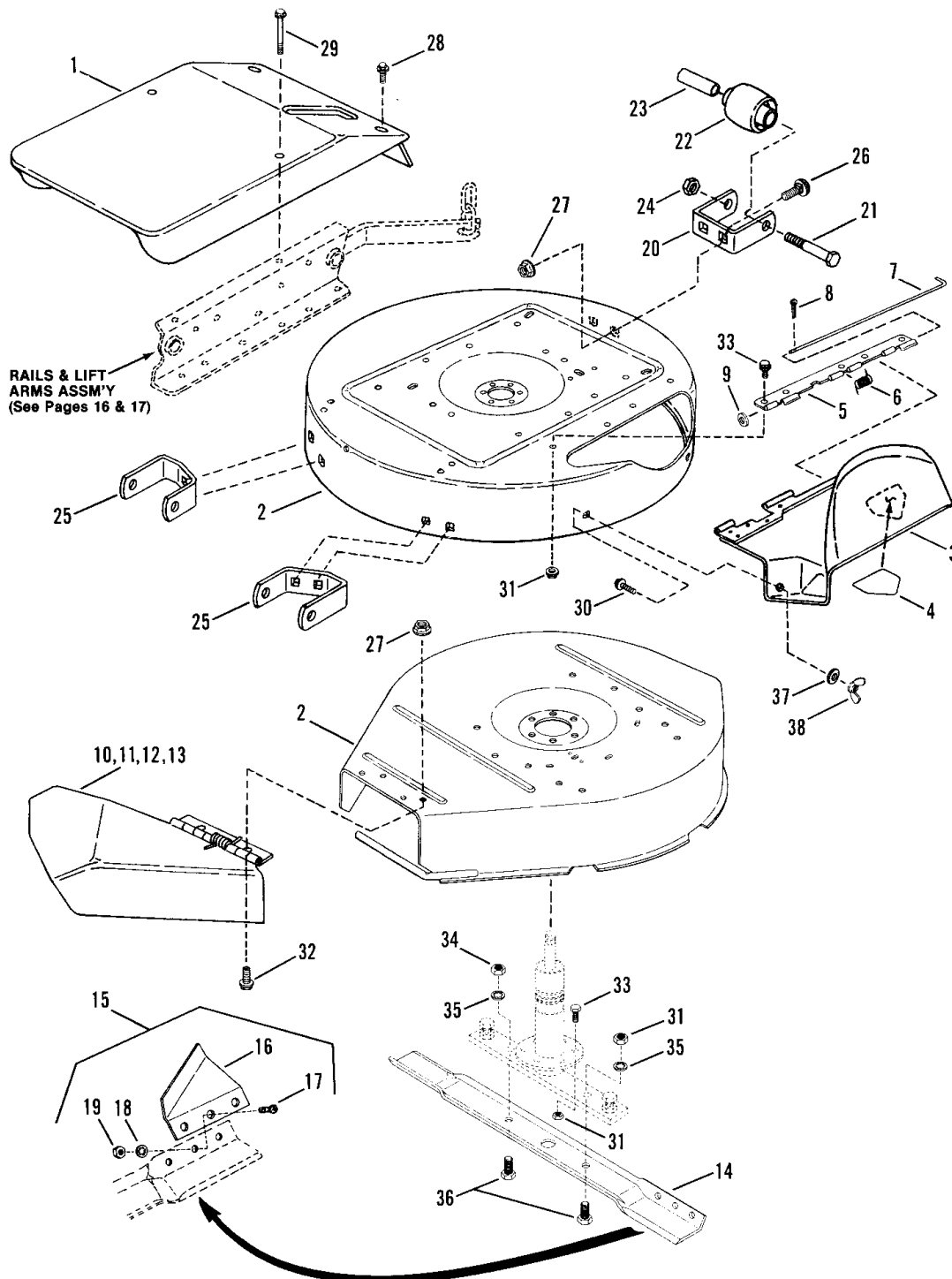
SMOOTH CLUTCH ASSEMBLY

ITEM	PART NO.	DESCRIPTION
*1	—	ASSEMBLY, Smooth Clutch (Includes items 2 thru 6)
2	5-7338	HUB, Driven Disc
3	5-7337	DISC, Driven
4	1-4523	WASHER, Thrust
5	3-2331	PLATE
6	9-0585	NUT, 5/16-18 Hex Flange Lock (4)
7	5-7653	ASSEMBLY, Brake Lever (Includes brake lining & rivet)
8	1-2313	RING, Retaining
9	9-0303	NUT, 1/4-28 Hex Lock
10	9-0055	WASHER, 1/4 Flat
11	1-0916	SPACER
12	9-0535	SCREW, 1/4-28x1" Hex Head Cap
13	3-2392	TOOL, Smooth Clutch
14	5-1474	ASSEMBLY, Guide & Link (Includes Items 15 thru 20)
15	1-4664	BOLT, 5/16-18 Shoulder
16	1-4663	SLIDE-HALF (2)
17	3-2370	GUIDE, Clutch Link
18	3-2371	LINK, Clutch
19	9-0187	WASHER, 5/16 Split Lock
20	9-0196	NUT, 5/16-18 Hex
21	9-0038	COTTER-PIN, 3/32x1"
22	9-0122	WASHER, 3/8 Flat
23	1-3885	SPRING, Clutch Brake
24	1-5464	STUD, Clutch Link
25	9-0390	WASHER, 3/8 Internal Tooth Lock
26	9-0155	NUT, 3/8 Hex
27	4-7887	LIFT, Yoke
28	1-1048	BEARING, Yoke(2)
29	9-0222	NUT, 5/16-24 Hex Center Lock (3)
30	9-0233	SCREW, 5/16-24x3/4" Hex Head Cap (2)
31	9-0506	SCREW, 3/8-16x1/2" Self-Tapping
32	3-8296	COLLAR, Yoke
33	1-1821	SPRING
34	3-1729	ROD
35	1-4771	SPRING
36	2-1706	TUBE
37	9-0188	WASHER, 5/16 Flat
38	1-1968	ROLLER
39	9-0130	NUT, 3/8-16 Hex
40	9-0118	WASHER, 3/8 Split Lock
41	9-0850	BOLT, 3/8-16x3/4" Short Neck Carriage

***CANNOT BE ORDERED AS ASSEMBLY. ORDER PARTS SEPARATELY**

Reitermodell Bezeichnung: Series 7, Standard & Commercial Rear Engine Rider Modell: Jahr:

CUTTING DECKS, DEFLECTORS



MANUAL NO. 06083

14

SERIES 7

Reitermodell Bezeichnung: Series 7, Standard & Commercial Rear Engine Rider Modell: Jahr:

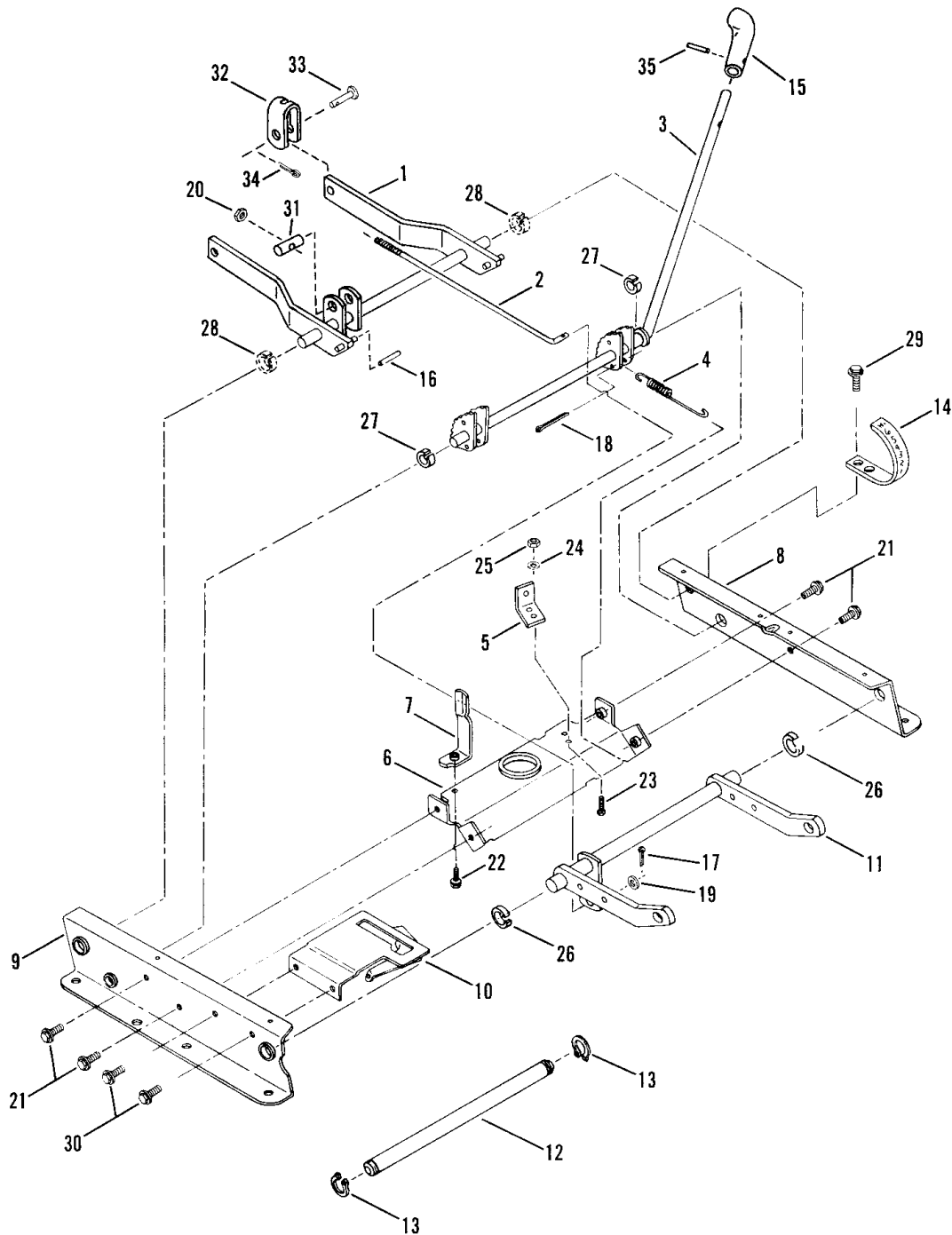
CUTTING DECKS, DEFLECTORS

ITEM	PART NO.	DESCRIPTION
1	1-6076	COVER, Spindle
2	6-0976	25" DECK KIT (*See NOTE below for Complete Cutter Unit)
-	6-0995	26" DECK KIT (*See NOTE below for Complete Cutter Unit)
-	6-0977	28" DECK KIT (*See NOTE below for Complete Cutter Unit)
-	6-0996	30" DECK KIT (*See NOTE below for Complete Cutter Unit)
-	6-0978	33" DECK KIT (*See NOTE below for Complete Cutter Unit)
3	5-1994	DEFLECTOR ASSM'Y., 33" Deck (Includes items 4 thru 9)
-	5-1978	DEFLECTOR, Discharge (Includes item 4)
4	1-3010	DECAL, Danger (Cut Finger)
5	3-9586	HINGE, Deflector
6	1-2303	SPRING, Hinge
7	3-1914	PIN, Hinge
8	9-0037	COTTER-PIN, 3/32x3/4
9	9-0055	WASHER, 1/4 Flat
10	5-7628	DEFLECTOR ASSM'Y., 28" Deck (Includes items 5,6,7,8, & 9)
-	5-1977	DEFLECTOR, Discharge (Includes item 4)
11	5-7624	DEFLECTOR ASSM'Y., 25" Deck (Includes items 5,6,7,8, & 9)
-	5-1976	DEFLECTOR, Discharge (Includes item 4)
12	5-2057	DEFLECTOR, Discharge, 26" Deck
13	5-2057	DEFLECTOR, Discharge, 30" Deck
14	1-9518	26" BLADE
-	1-8068	26" BLADE
-	1-9515	28" BLADE
-	1-8069	30" BLADE
-	1-9523	33" BLADE
15	6-0480	KIT, Air Lift (28 & 33" Models)(Includes items 16,17,18, & 19)
-	6-0735	KIT, Air Lift (30" Models)(Includes items 16,17,18, & 19)
16	3-7723	AIR-LIFT (2)
17	9-0228	SCREW, 5/16-24x11/16" Machine (6)
18	9-0391	WASHER, 5/16-24 Internal Tooth Lock (6)
19	9-0223	NUT, 5/16-24 Hex (6)
20	3-8451	BRACKET, Gage Wheel (Front)
21	9-0859	SCREW, 3/8-24x3-3/4" Hex Head Cap (3)
22	1-9190	WHEEL, Gage (3)
23	1-5272	SPACER (3)
24	9-0289	NUT, 3/8-24 Hex Lock (3)
25	3-8450	BRACKET, Gage Wheel (Rear) (2)
26	9-0004	BOLT, 5/16-18x1/2" Short Neck Carriage (6)
27	9-0585	NUT, 5/16-18 Hex Flange Lock (8)
28	9-1016	SCREW, 1/4-20x5/8" Hex Head Self-Tapping (4)
29	9-1015	SCREW, 1/4-20x3-1/2" Hex Head Self-Tapping
30	9-0001	BOLT, 5/16-18x3/4" Short Neck Carriage (2)
31	9-0613	NUT, 3/8-16 Hex Lock (9)
32	9-0721	BOLT, 5/16-18x1/2" Hex Flange Lock (2)
33	9-0612	BOLT, 3/8-16x3/4" Hex Flange Lock (9)
34	9-0559	NUT, 1/4-20 Hex Jam (2)
35	9-0509	WASHER, 1/2 Internal Tooth Lock (2)
36	9-0392	SCREW, 1/2-20x1" Hex Head Cap (2)
37	9-0188	WASHER, 5/16 Flat (2)
38	9-0492	WING-NUT, 5/16-18 (2)

***NOTE:** For Complete Cutter unit, order following numbers:
 25" Replacement Deck-Complete Unit 6-0984
 26" Replacement Deck-Complete Unit 6-0985
 28" Replacement Deck-Complete Unit 6-0986
 30" Replacement Deck-Complete Unit 6-0987
 33" Replacement Deck-Complete Unit 6-0988

Reitermodell Bezeichnung: Series 7, Standard & Commercial Rear Engine Rider Modell: Jahr:

RAILS, LIFT ARMS, CAM LIFT



MANUAL NO. 06083

16

SERIES 7

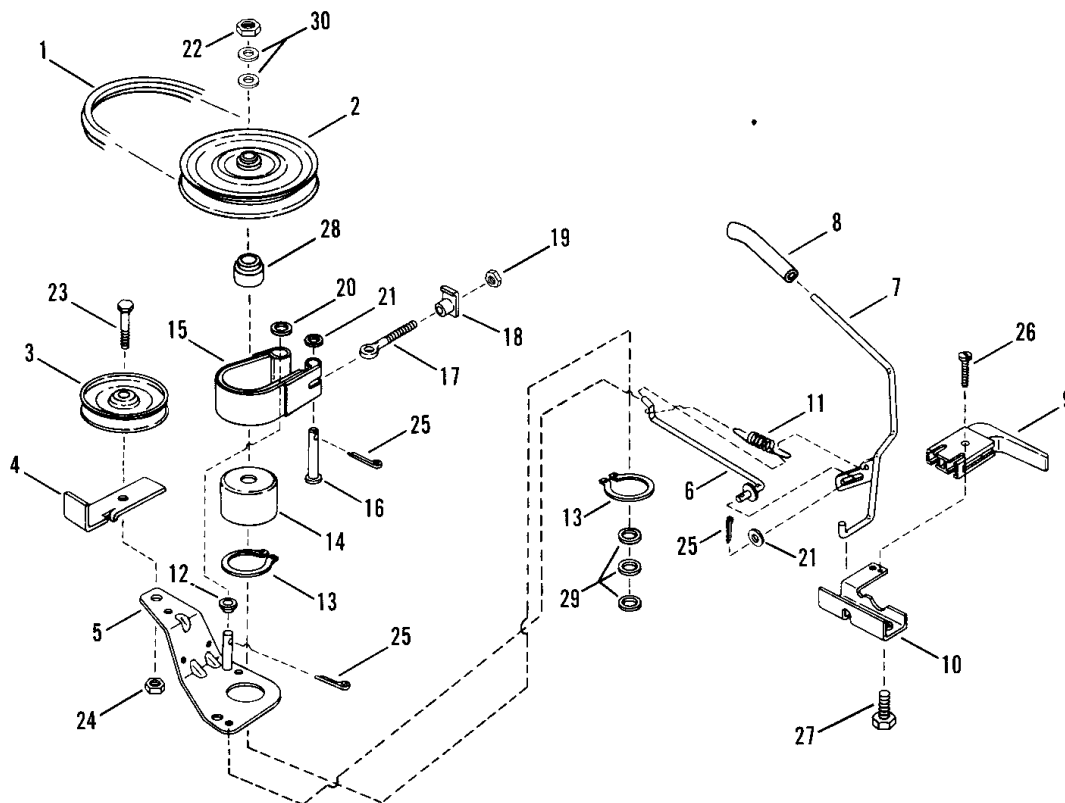
Reitermodell Bezeichnung: Series 7, Standard & Commercial Rear Engine Rider Modell: Jahr:

RAILS, LIFT ARMS, CAM LIFT

ITEM	PART NO.	DESCRIPTION
1	5-1847	ASSEMBLY, Rear Lift Arm (25,26,28 &30" Models)
-	5-7281	ASSEMBLY, Rear Lift Arm (33" Models)
2	1-6122	ROD, Leveling
3	4-0595	CAM LIFT LEVER
4	1-1074	SPRING, Cam Lift
5	3-2243	ANCHOR (Auto. Blade Control Models)
6	3-1838	BRACE, Top
7	3-1855	GUIDE, Belt
8	3-7709	RAIL, Left Hand
9	3-7710	RAIL, Right Hand
10	5-1310	ASSEMBLY, Clutch-Plate
11	4-7956	FRONT LIFT ARM, Non-Adjustable, (25,26,28 & 30" Models)
-	4-7979	FRONT LIFT ARM, Adjustable (33" Models)
12	2-0882	SUPPORT ROD (Front Lift Arm to Front End)
13	1-0739	RING, Retaining
14	3-1975	PLATE, Indicator
15	2-3658	GRIP, Height Adjustment Lever
16	1-0737	PIN, Roll (Part of item 1) (2)
17	9-0365	PIN, 1/8x3/4" Cotter
18	9-0364	PIN, 5/32x1" Cotter
19	9-0122	WASHER, 3/8 Flat
20	9-0289	NUT, 3/8-24 Hex
21	9-0506	SCREW, 3/8-16x1/2" Hex Hd.,Self-Tapping (4)
22	9-0361	SCREW, 5/16-18x5/8" Hex Self-Tapping
23	9-0233	SCREW, 5/16-24x3/4" Hex Head Cap (2)
24	9-0391	LOCKWASHER, 5/16 Internal Tooth Lock (2)
25	9-0223	NUT, 5/16-24 Hex (2)
26	1-2067	RING, Red (2)
27	2-3791	RING, White (2)
28	1-2068	RING, Blue (2)
29	9-0612	SCREW, 3/8-16x3/4" Hex Flange Lock (2)
30	9-0858	SCREW, 5/16-18x1/2" Self-Tapping (2)
31	2-2082	PIVOT, Leveling
32	3-2276	CLEVIS (2)
33	1-0736	PIN, Clevis (2)
34	9-0037	PIN, 3/32x3/4" Cotter (2)
35	9-0844	ROLL-PIN

Reitermodell Bezeichnung: Series 7, Standard & Commercial Rear Engine Rider Modell: Jahr:

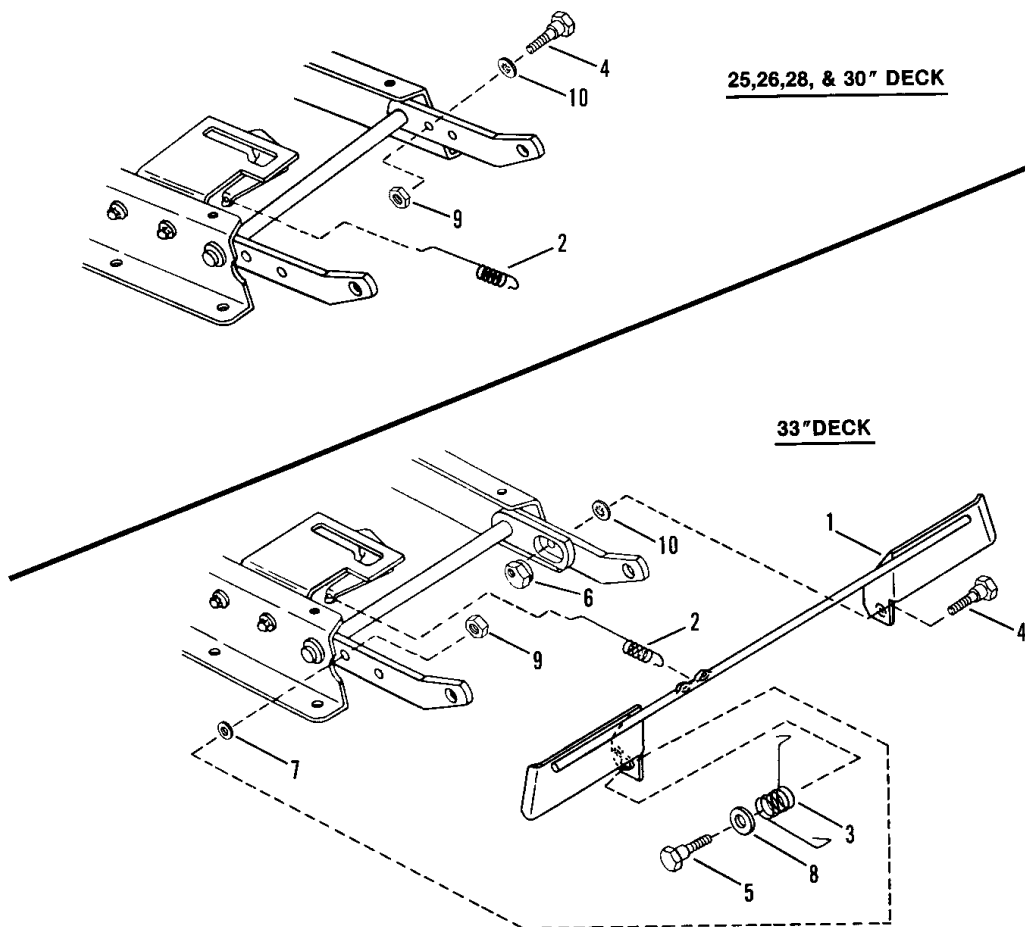
BELTS, BRAKES, INTERLOCK



ITEM	PART NO.	DESCRIPTION
1	1-8236	BELT, Drive (25,26,28,30, & 33" Models)
2	1-8781	PULLEY, Spindle (Replaces 1-8587)
3	1-1029	PULLEY, Idler
4	3-2111	RESTRICTOR, Belt (Replaces 3-0982)
5	4-7787	ARM, Idler
6	1-2055	ROD, Idler
7	4-0594	HANDLE, Blade ON—OFF (Lever)
8	2-3657	GRIP, Handle
9	1-8524	SWITCH, Deck Interlock
10	3-8021	MOUNT, Handle
11	1-4168	SPRING, Blade Handle
12	1-4314	SPACER
13	1-0740	RING, Retainer(2)
14	3-2169	DRUM, Brake
15	5-7307	BAND, Brake

ITEM	PART NO.	DESCRIPTION
16	1-4304	PIN, 1/4x1-5/8" Clevis
17	1-4302	BOLT, 1/4-20 Eye
18	1-4303	NUT, 1/4-20 Tee
19	9-0063	NUT, 1/4-20 Hex
20	9-0122	WASHER, 3/8 Flat
21	9-0055	WASHER, 1/4 Flat(2)
22	1-0027	NUT, 3/4-16 Hex Jam
23	9-0161	SCREW, 3/8-24x1 3/4" Hex Head Cap
24	9-0289	NUT, 3/8-24 Hex Lock
25	9-0037	PIN, 3/32x3/4" Cotter(3)
26	9-0299	SCREW, #10-32x1" Self-Tapping
27	9-0362	SCREW, 1/4-20x5/8" Self-Tapping
28	1-5290	HUB, Pulley
29	1-0935	WASHER, 49/64x1-1/8" Flat (3)
30	3-2027	WASHER, 49/64x1-1/2" Flat (2)

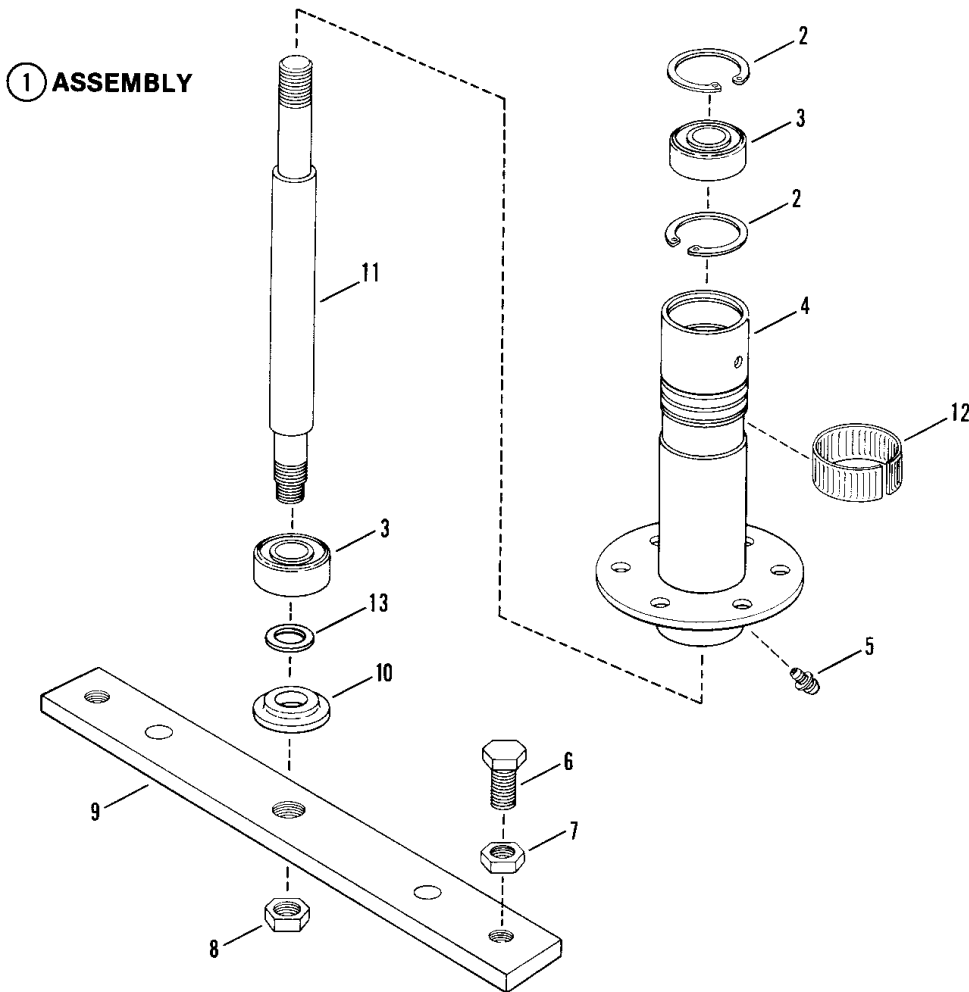
BLADE STOP PEDALS



ITEM	PART NO.	DESCRIPTION
1	4-0597	PEDAL, Blade Stop Control (25,26,28,30, & 33" Models)
2	1-4389	SPRING, Latching
3	1-5448	SPRING, Pedal
4	1-5495	BOLT, 3/8-24x3/4" Shoulder
5	1-5446	BOLT, 3/8-24x9/16" Shoulder
6	1-5447	ECCENTRIC, Leveling
7	9-0122	WASHER, 3/8 Flat
8	9-0250	WASHER, 1/2 Flat (2)
9	9-0289	NUT, 3/8-24 Hex Lock
10	9-0390	WASHER, 3/8 Internal Tooth Lock

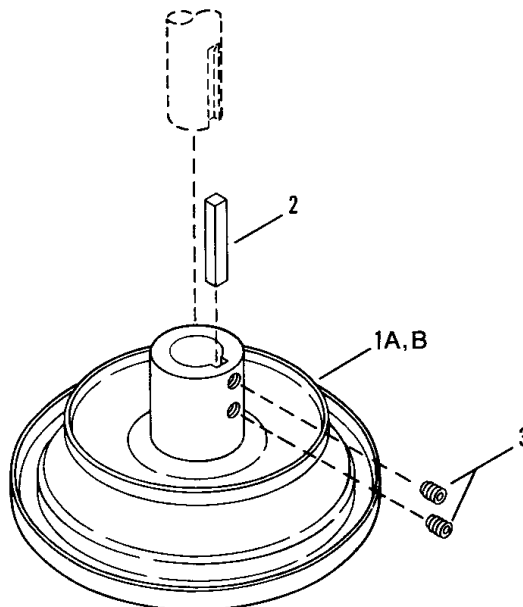
Reitermodell Bezeichnung: Series 7, Standard & Commercial Rear Engine Rider Modell: Jahr:

SPINDLE



ITEM	PART NO.	DESCRIPTION
1	5-9813	ASSEMBLY, Spindle Housing (Includes items 2 thru 11) (25,26,28,30, & 33" Models)
2	1-2491	RING, Retaining (2)
3	1-3313	BEARING, Spindle (2)
4	5-0696	HOUSING, Spindle (Includes item 5)
5	1-0817	FITTING, Lube
6	9-0392	SCREW, 1/2-20x1" Hex Head Cap, Grade 5 (2)
7	9-0559	NUT, 1/2-20 Hex-Jam (2)
8	9-0356	NUT, 5/8-18 Hex Lock
9	3-7751	HOLDER, Blade
10	1-4407	WASHER, Spindle
11	2-1742	SPINDLE
12	1-2670	RING, Tolerance
13	1-0121	WASHER, Shim

DRIVE DISC ASSEMBLY

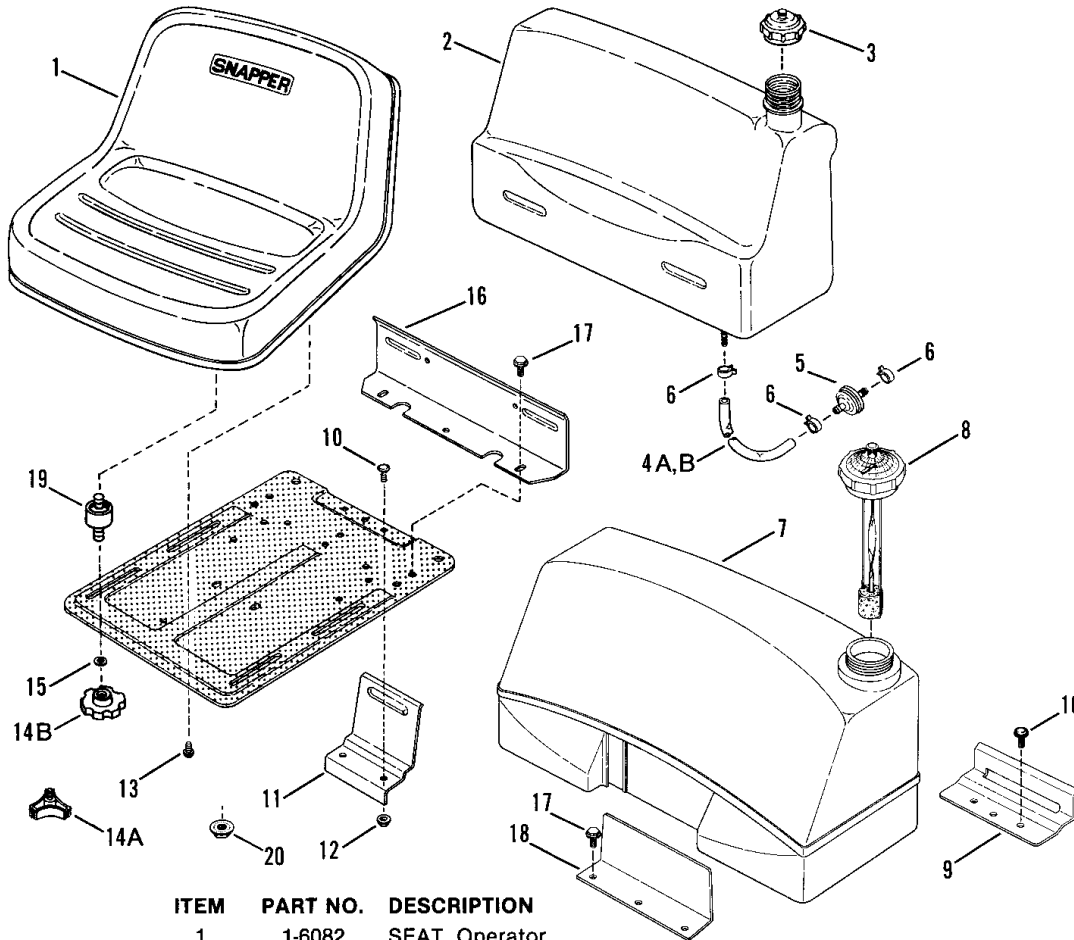


**NOTE: Replace As Assembly Only - Special Machining Is Done
After Hub, Pulley, and Disc Are Assembled For These Models.**

ITEM	PART NO.	DESCRIPTION
1A	5-1581	ASSEMBLY, Drive Disc, 4" O.D. for 30 & 33" Models
1B	5-1582	ASSEMBLY, Drive Disc, 5" O.D. for 25,26, & 28" Models
2	1-0210	KEY, 1/4 x 1/4 x 2"
3	9-0132	SET-SCREW, 3/8-16x3/8" (2)

Reitermodell Bezeichnung: Series 7, Standard & Commercial Rear Engine Rider Modell: Jahr:

FUEL TANK & OPERATORS SEAT



ITEM	PART NO.	DESCRIPTION
1	1-6082	SEAT, Operator
2	5-1905	ASSEMBLY, Fuel Tank (Includes item 3)(6.5 & 8 HP Models)
3	1-2515	CAP, Fuel Tank
4A	3-2015	HOSE, Fuel, 7" (6.5,8, & 12 HP B&S Engine)
4B	1-2912	HOSE, Fuel, 12-1/2" (14 HP B&S Engine)
5	1-4359	FILTER, Fuel, In-Line
6	1-2222	CLAMP, Fuel Line (4)
7	5-1863	ASSEMBLY, Fuel Tank (Includes item 8) (12 & 14 HP Models)
8	2-3825	CAP & GAUGE, Fuel Tank
9	3-8481	BRACKET, Fuel Tank, Rear (12 & 14 HP Models)
10	9-0799	BOLT, 5/16-18x5/8" Short Neck Carriage (2)
11	3-8471	BRACKET, Fuel Tank, Rear (6.5 & 8 HP Models)
12	9-0585	NUT, 5/16-18 Hex Flange Lock (2)
13	9-1038	BOLT, 5/16-18x1/2" Hex Flange Lock (2)
14A	2-3191	KNOB, Seat Adjusting (2)(8, 12 & 14 HP Models)
14B	2-3735	KNOB, Seat Adjusting (2)(6.5 HP Models)
15	9-0188	WASHER, 5/16 Flat (2)
16	3-8470	BRACKET, Fuel Tank, Front (6.5 & 8 HP Models)
17	9-0361	SCREW, 5/16-18x5/8" Self-Tapping (6)
18	3-8480	BRACKET, Fuel Tank, Front (12 & 14 HP Models)
19	1-6285	MOUNT, ISO Sandwich (2)(6.5 HP Models)
20	9-0951	NUT, 5/16-18 Hex Flange Lock (2)

MANUAL NO. 06083

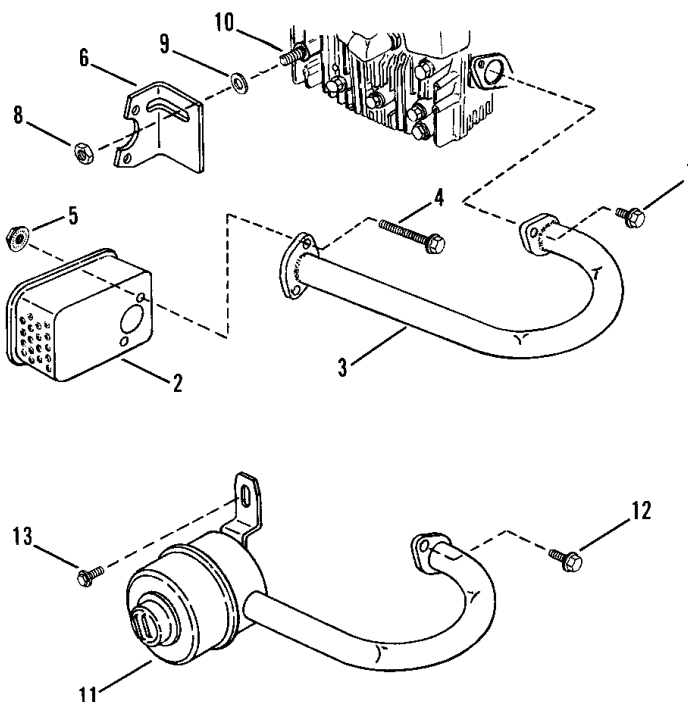
SERIES 7

Reitermodell Bezeichnung: Series 7, Standard & Commercial Rear Engine Rider Modell: Jahr:

EXHAUST - 6.5, 8, 12, & 14 HP ENGINES

① KIT, Muffler

ENGINE SPECS	
6.5 HP B&S ENGINE SNAPPER NO. 1-7928 B&S MODEL 170702 B&S TYPE 6012	
6.5 HP B&S ENGINE SNAPPER NO. 1-7927 B&S MODEL 170707 B&S TYPE 6011	
8 HP B&S ENGINE SNAPPER NO. 1-7925 B&S MODEL 191702 B&S TYPE 6020	
8 HP B&S ENGINE SNAPPER NO. 1-7926 B&S MODEL 191707 B&S TYPE 6019	
12 HP B&S ENGINE SNAPPER NO. 1-7923 B&S MODEL 281707 B&S TYPE 0162	
14 HP B&S ENGINE SNAPPER NO. 1-7921 B&S MODEL 261777 B&S TYPE 0126	

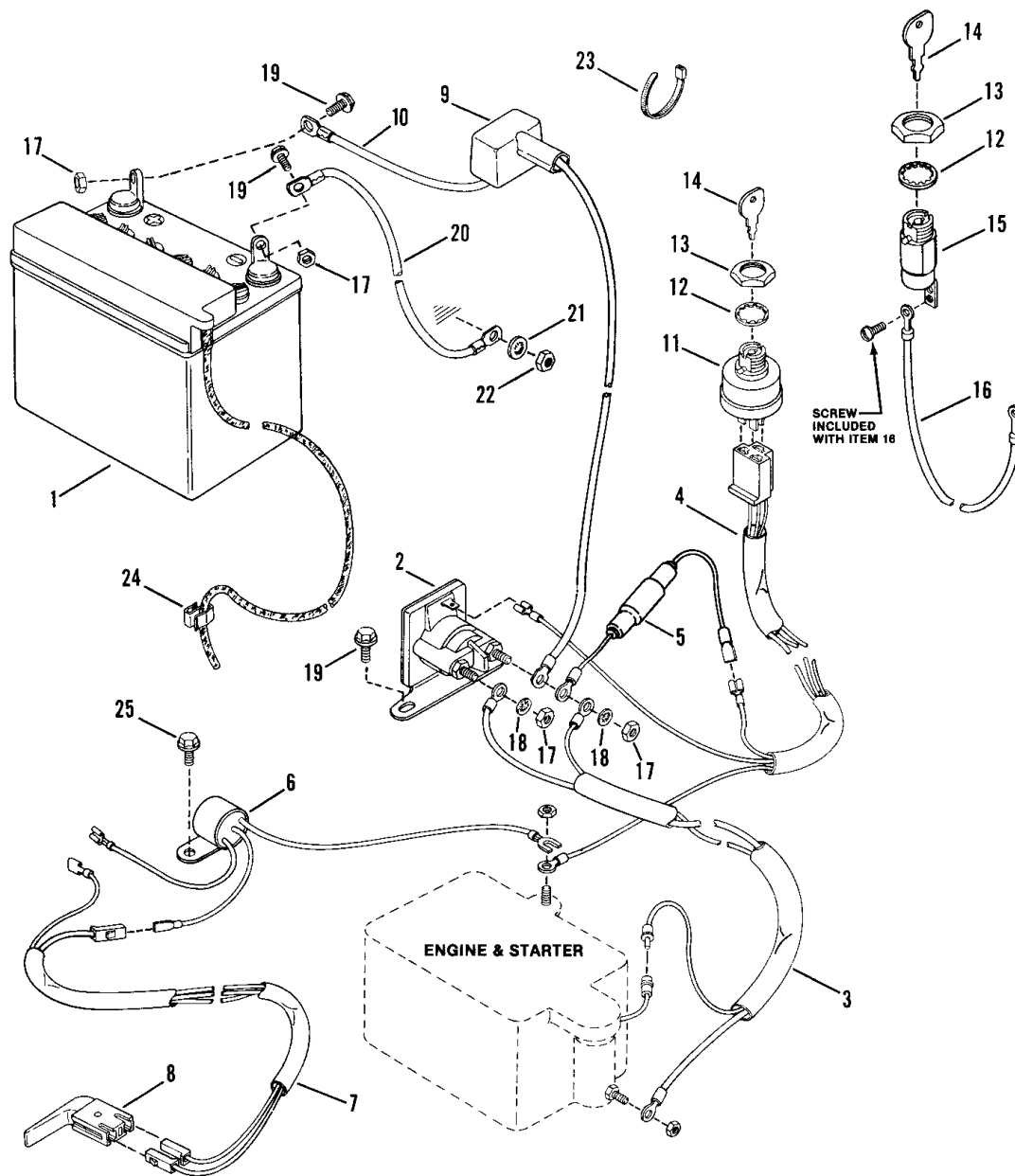


ITEM	PART NO.	DESCRIPTION
1	6-0316	KIT, Muffler (Includes items 2 thru 10)(6.5 & 8 HP Models)
2	1-8198	MUFFLER
3	1-8197	TUBE, Exhaust
-	6-0489	HARDWARE BAG (Includes items 4 thru 10)
4	9-0553	SCREW, 5/16-18x3" Hex Head Cap (2)
5	9-0585	NUT, 5/16-18 Hex Flange Lock (2)
6	3-2414	BRACKET, Muffler
7	9-0072	SCREW, 1/4-20x5/8" Hex Head Cap (2)
8	9-0196	NUT, 5/16-18 Hex
9	1-2418	WASHER, Flat
10	1-2419	STUD, Cylinder head
*11	1-6079	MUFFLER
*12	9-0206	SCREW, 5/16-18x3/4" Hex Head Cap (2)
*13	9-0073	SCREW, 1/4-20x3/4" Hex Head Cap

*12 HP MODELS

Reitermodell Bezeichnung: Series 7, Standard & Commercial Rear Engine Rider Modell: Jahr:

ELECTRICAL SYSTEMS



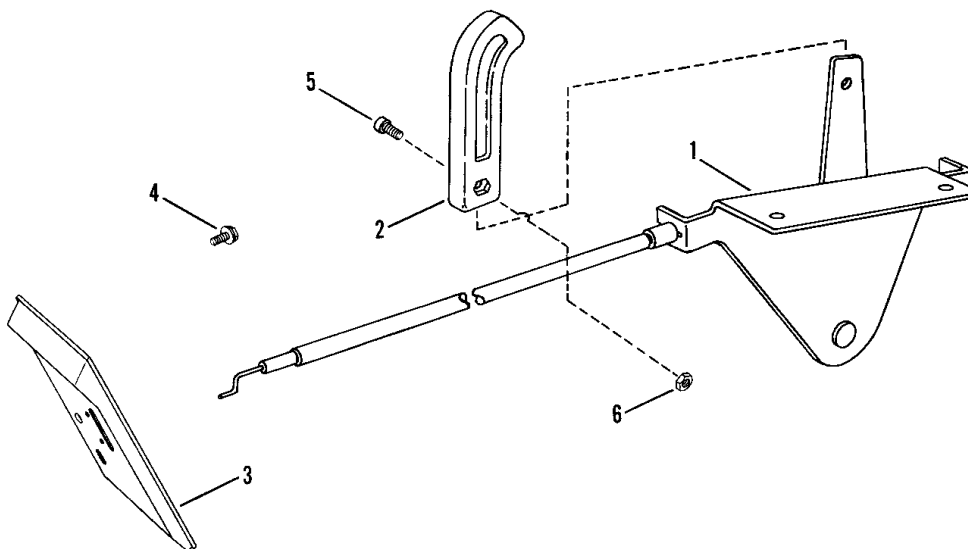
ReitermÄrher Bezeichnung: Series 7, Standard & Commercial Rear Engine Rider Modell: Jahr:

ELECTRICAL SYSTEMS

ITEM	PART NO.	DESCRIPTION
1	6-0753	KIT, 12V Dry Charge Battery
2	1-8817	SOLENOID
3	1-5430	HARNESS, Starter Wiring
4	1-9297	HARNESS, Ignition Wiring
5	1-6168	HOLDER, Fuse (Includes Fuse)
-	1-6169	FUSE (10 AMP)
6	2-3782	INTERLOCK
7	1-9143	HARNESS, Deck Interlock Wiring
8	1-8524	SWITCH, Deck Interlock
9	1-2444	COVER, Battery Cable
10	2-3811	CABLE, Positive (Red)
11	1-8816	SWITCH, Ignition (Used with Electric Start)
12	9-0880	WASHER, 5/8 Internal Tooth Lock
13	1-5438	NUT, 5/8-32 Hex
14	2-3504	KEY, Switch (2)
15	1-1853	SWITCH, Ignition (Used with Manual Start)
16	1-9299	WIRE, Ground (Used with Manual Start)
17	9-0063	NUT, 1/4-20 Hex (4)
18	9-0053	WASHER, 1/4 Internal Tooth Lock (2)
19	9-0072	SCREW, 1/4-20x5/8" Hex Head Cap (3)
20	2-3812	CABLE, Negative
21	9-0391	WASHER, 5/16 Internal Tooth Lock
22	9-0196	NUT, 5/16-18 Hex
23	1-2080	CABLE-TIE (2)
24	1-5063	CLIP, Battery Hose
25	9-0539	SCREW, 1/4-20x1/2" Hex Head Self- Tapping

Reitermodell Bezeichnung: Series 7, Standard & Commercial Rear Engine Rider Modell: Jahr:

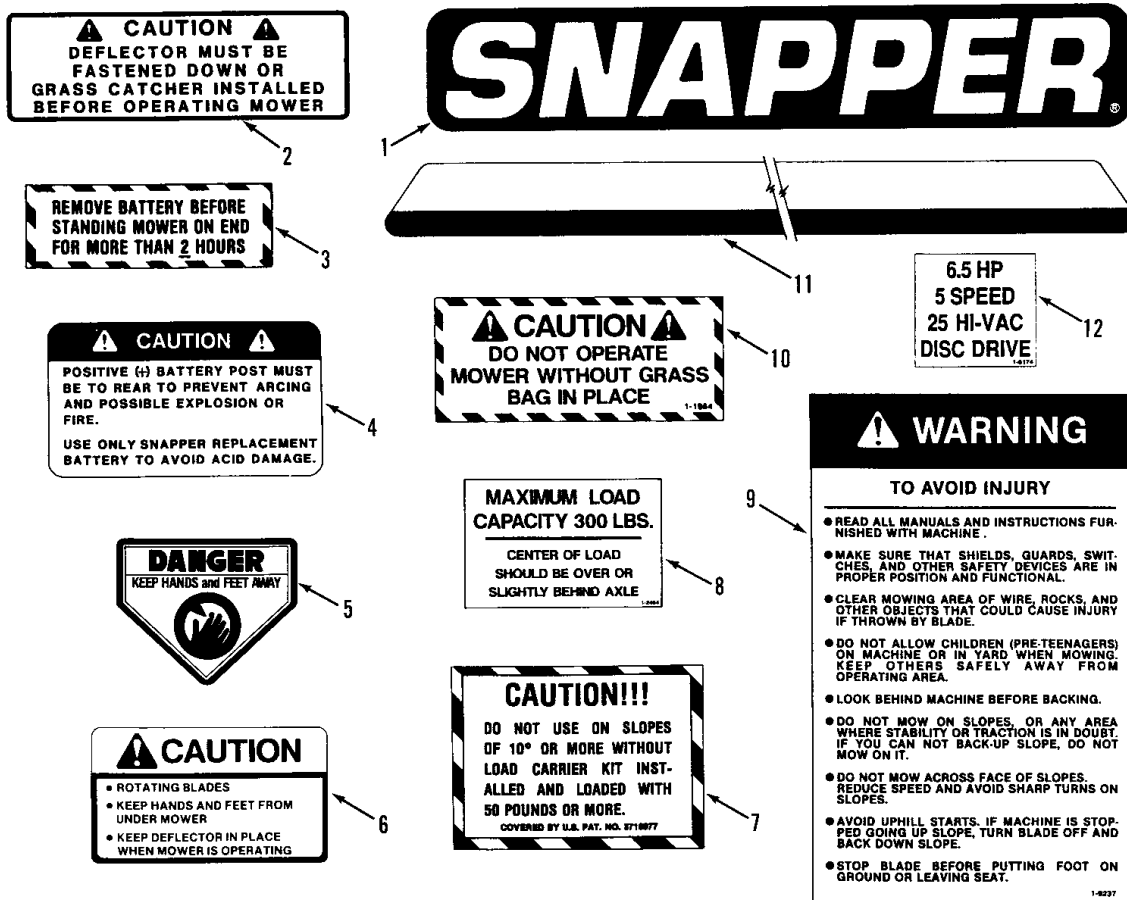
THROTTLE CONTROL



ITEM	PART NO.	DESCRIPTION
1	2-3668	CONTROL, Throttle
2	2-3655	KNOB, Throttle Control
3	2-3665	COVER, Dash Panel (Electric Start)
-	2-3680	COVER, Dash Panel (Recoil Start)
4	9-0853	SCREW, #10-24x1/2" Hex Flange Self-Tapping (5)
5	9-1017	SCREW, #8-32x3/8" Rec. Fill. Hd. (2)
6	9-1018	NUT, #8-32 Hex (2)

Reitermodell Bezeichnung: Series 7, Standard & Commercial Rear Engine Rider Modell: Jahr:

DECALS



ITEM	PART NO.	DESCRIPTION
1	1-9293	DECAL, Snapper
2	1-4416	DECAL, Caution, Deflector
3	1-2358	DECAL, Battery
4	1-5691	DECAL, Caution, Battery
5	1-3010	DECAL, Danger
6	1-9582	DECAL, Caution, Rotating Blades
7	1-1910	DECAL, Caution, Carrier
8	1-2464	DECAL, Maximum Capacity
9	1-9237	DECAL, Warning, Instruction
10	1-1964	DECAL, Caution, Grass Bag
11	2-3784	DECAL, Pin Stripe
12	1-6174	DECAL, Model, 6.5 HP, 25" Cut (Shown)
13	1-6175	DECAL, Model, 6.5HP, 26" Cut (Not Shown)
14	1-6176	DECAL, Model, 8HP, 28" Cut (Not Shown)
15	1-6177	DECAL, Model, 12HP, 28" Cut (Not Shown)
16	1-6178	DECAL, Model, 8HP, 30" Cut (Not Shown)
17	1-6179	DECAL, Model, 12HP, 30" Cut (Not Shown)
18	1-6180	DECAL, Model, 12HP, 33" Cut (Not Shown)
19	1-6181	DECAL, Model, 14HP, 33" Cut (Not Shown)
20	1-4119	DECAL, Thatcherizer (Not Shown)

ReitermÃ¶her Bezeichnung: Series 7, Standard & Commercial Rear Engine Rider Modell: Jahr:

Parts Manual for

SNAPPER[®]

**SERIES 7, STANDARD
& COMMERCIAL
REAR ENGINE
RIDER**

IT IS THE POLICY OF SNAPPER POWER EQUIPMENT TO IMPROVE ITS PRODUCTS WHENEVER IT IS POSSIBLE AND PRACTICAL TO DO SO. WE RESERVE THE RIGHT TO MAKE CHANGES OR ADD IMPROVEMENTS AT ANY TIME WITHOUT INCURRING ANY OBLIGATION TO MAKE SUCH CHANGES ON PRODUCTS MANUFACTURED PREVIOUSLY.

SNAPPER POWER EQUIPMENT  
McDonough, GA., 30253 U.S.A.

MANUAL NO. 06083

(IR 12/89)

Printed in U.S.A.